

**POWER VT® Plus Condensing Water Heater**  
**AquaPLEX® STORAGE TANK (UNLINED DUPLEX ALLOY)**  
**TANK SERIES 250 Gallon ■ 1500 to 2000 MBH**

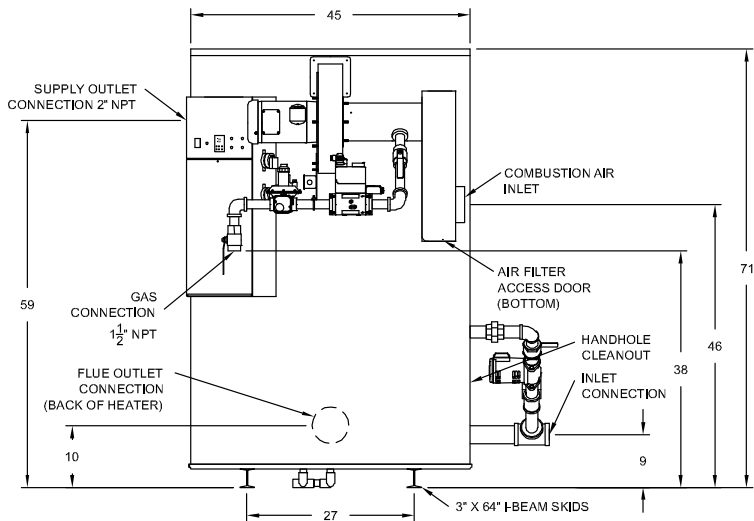
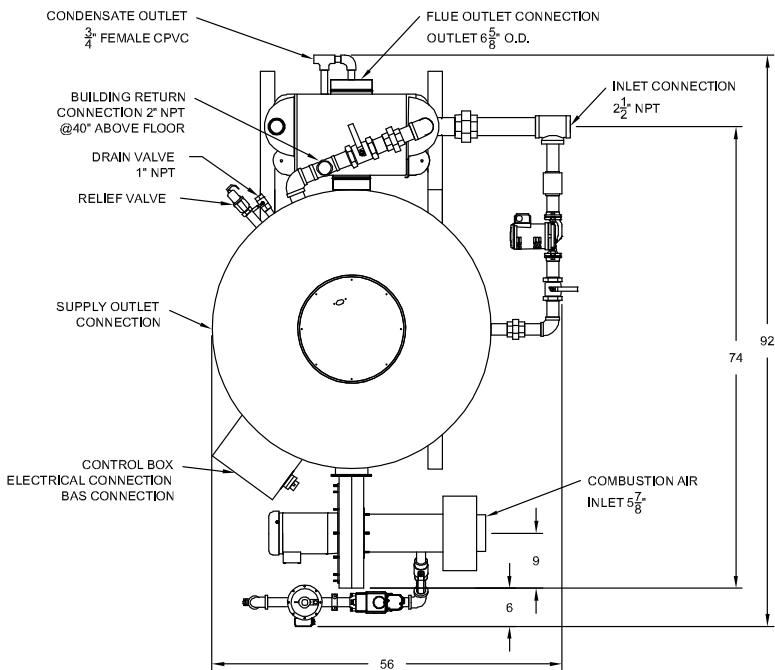
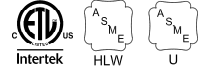
MODEL	BTU INPUT	GPH RECOVERY (thermal efficiency)		SHIPPING WEIGHT (LBS.)	OPERATING WEIGHT (LBS.)
		70° to 140°F ①	40° to 140°F ②		
150 LX 250A-PVIF	1,500,000	2470 (96%)	1737 (96.5%)	2115	3375
180 LX 250A-PVIF	1,800,000	2964 (96%)	2085 (96.5%)	2115	3375
200 LX 250A-PVIF	2,000,000	3293 (96%)	2317 (96.5%)	2115	3375

① Recoveries and thermal efficiency derived from DOE 10 CFR 431 testing requirements (ANSI Z21.10.3 @ 70°F to 140°F).

② Recoveries and thermal efficiency based upon 40°F entering water temperature at full fire.

Dimensions are in inches unless otherwise specified.

For standard and optional equipment, see form PV 8005.



**Standard Electrical**

120V, 1Ø, 60 Hz., 15 amp circuit

**Venting**

Use a 6" CPVC vent or use an ETL, UL, ULC or CSA listed single or double wall 6" stainless steel or listed Polypropylene Category IV venting system, minimum distance 5 eq. feet, maximum distance 100 eq. feet. Longer vents, ETL listed with larger diameters, see I&M.

**Inlet Combustion Air**

Up to 100 eq. ft. using 6" PVC or galvanized vent pipe. Longer lengths, ETL listed with larger diameters, see I&M.

**Gas Pressure - Natural**

Minimum inlet flow pressure: 4.5" W.C.  
 Maximum static pressure: 14" W.C.  
 For < 4.5"W.C., consult factory.  
 For LP option, consult factory.

**Minimum Service Clearances**

18" from sides,  
 24" from front and top

**Emissions**

< 20 ppm NOx

