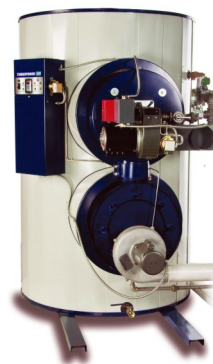


# TURBOPOWER® 99 GAS - CONDENSING WATER HEATER

## with AquaPLEX® STORAGE TANK (DUPLEX STAINLESS STEEL)



### STANDARD FEATURES and EQUIPMENT

#### PERFORMANCE

- 99% thermal efficiency at full fire from 40°F to 140°F
- 97% to 98% thermal efficiency per DOE 10 CFR 431 (Per ANSI Z21.10.3, 70°F to 140°F)

#### PRESSURE VESSEL

- AquaPLEX® tank (unlined duplex stainless steel)
- ASME stamped and National Board Registered for 150 psi Maximum Allowable Working Pressure
- Temperature and pressure relief valve (ASME rated)
- Non-ferrous, removable tank fittings
- Fiberglass insulation
- Coated steel jacket panels
- Bottom drain valve with tank pressure gauge
- Lifting lugs

#### HEAT EXCHANGERS

- Submerged, removable, two-pass heat exchanger with AquaPLEX® combustion chamber and copper fire tubes. ASME stamped for 150 psi
- Submerged, removable economizer with copper fire tubes and stainless steel baffles. ASME stamped for 150 psi

#### BURNER, OPERATING CONTROLS AND SAFETIES

- Power combustion burner with spark ignition
- Electronic flame safeguard
- TempTrac™ programmable electronic operating control adjustable from 85°F to 165°F with digital temperature readout. Modbus RTU protocol
- Seven-day time clock built into operating control
- High temperature limit (auto reset)
- Terminals for remote on-off
- Stack over-temperature switch

#### WARRANTY AND SERVICE POLICY

- 25-year tank warranty (PV901) ①
  - 10-year heat exchanger warranty (PV584) ①
  - 1-year burner and parts warranty (PV536) ①
  - 1-year cost-free service policy (PV551) ①
- Conditions exist outside of the continental United States

#### CODES AND STANDARDS

- Intertek/ETL listed
  - UL 795 / CSA CAN1-3.1
  - NSF 372 lead free
  - Zero-clearance (top, sides and rear) and approved for PVC vent material
- ASHRAE 90.1 compliant

#### MISCELLANEOUS

- Factory authorized startup
- Factory equipped with fabricated condensate neutralizer
- Exhaust vent termination cap provided

① See complete warranties and service policies for full details.

PVI reserves the right to change the design and specification without notice.

### FACTORY OPTIONS PACKAGES

#### 1 ACCESSORIES PACKAGE

- Electronic low-water cutoff (auto reset)
- High temperature limit (manual reset)
- Relay and proving terminal for remote equipment

#### 3 ALARM and COMMUNICATIONS PACKAGE

- Alarm on any failure functionality with switched contacts for remote notification
- 95dB local audible alarm with silencing switch
- 485 serial cable to connect electronic operator to BAS (Modbus RTU)

#### 4 CSD-1 COMPLIANT CONTROLS PACKAGE

- Includes the "Accessories" Package*
- Test and manual-reset function for low-water cutoff
  - Non-recycle, single-try ignition

### FACTORY INSTALLED INDIVIDUAL OPTIONS

- A** CSA-rated temperature and pressure relief valve(s)
- C** MASS code compliance
- J** Direct combustion air intake adapter for burner
- N** Celsius functionality for operating control

### FIELD INSTALLED OPTIONS

Protocol gateways (consult factory)  
\_\_ Bacnet IP \_\_ Bacnet MSTP \_\_ Lonworks

### OPTIONAL SERVICE POLICY

Long-life service policy (PV559) ①  
Conditions exist outside of the continental United States

### CUSTOM CONFIGURATION

Consult representative for additional custom options

### PART NUMBER ORDERING SEQUENCE

BASE MODEL# + "PACKAGES" + "OPTIONS"

Example: 2971 L 600ATP-13AC