

QuickDraw® STEAM

STORAGE-TYPE HOT WATER GENERATOR

AquaPLEX® STORAGE TANK (UNLINED DUPLEX ALLOY)

TANK SERIES 215 GALLON

MODEL NUMBER	GPH RECOVERY and LB/HR STEAM REQUIRED @ 15 PSI STEAM TO THE INLET *		A COLD INLET AND RETURN NPT	B HOT OUTLET NPT	C STEAM INLET NPT * (@ 15 psi)	D CONDENSATE TRAP CONNECTION NPT **	E PULL SPACE FOR U-TUBE	F CHANNEL SKID LENGTH	F & T TRAP SIZE (@ 15 PSI)	SHIPPING WEIGHT LBS
	40°F to 120°F	40°F to 140°F								

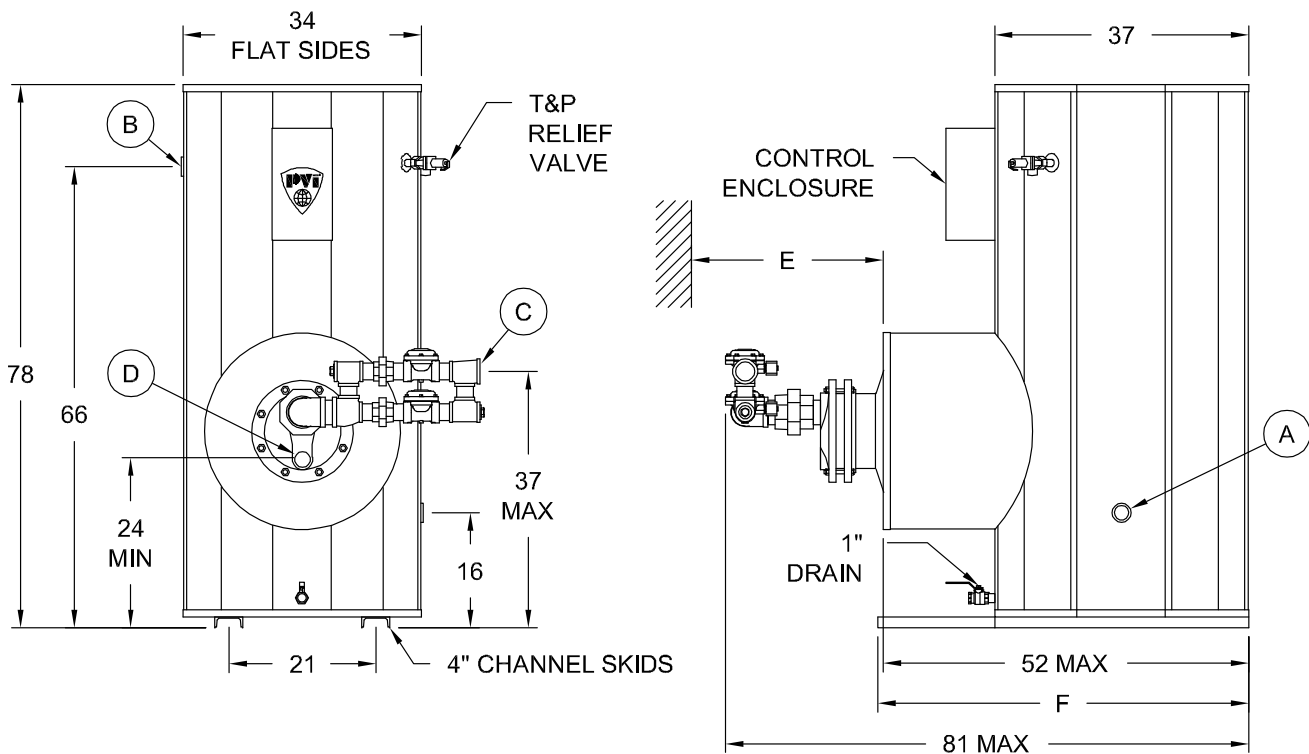
SINGLE-WALL

380 L 215A-QS	520	360	380	330	2	2	1	3/4	33	37	3/4	1070
520 L 215A-QS	700	480	520	450	2	2	1	3/4	45	54	3/4	1170
900 L 215A-QS	1220	850	900	780	2	2	1-1/2	1	45	54	1-1/4	1220
1780 L 215A-QS	2420	1680	1780	1540	2	2	PV 6589	1-1/4	45	54	1-1/2	1270
3120 L 215A-QS	4240	2940	3120	2700	2	2	2-1/2	2	45	54	2	1370
3800 L 215A-QS	4740	3300	3790	3300	2	2	2-1/2	2	45	54	2	1470
	gph	lb/hr	gph	lb/hr								

DOUBLE-WALL

330 L 215A-QSD	440	310	330	280	2	2	1	3/4	33	37	3/4	1070
440 L 215A-QSD	600	410	440	380	2	2	1	3/4	45	54	3/4	1220
830 L 215A-QSD	1120	780	830	720	2	2	1-1/2	1	45	54	1-1/4	1270
1520 L 215A-QSD	2060	1430	1520	1320	2	2	2	1-1/4	45	54	1-1/2	1370
2650 L 215A-QSD	3600	2500	2650	2300	2	2	2-1/2	2	45	54	2	1520
3790 L 215A-QSD	4740	3300	3790	3300	2	2	2-1/2	2	45	54	2	1670
	gph	lb/hr	gph	lb/hr								

* For recoveries, steam flows, valves, and trap sizes at different steam pressures and temperature rises, refer to forms PV 6587 thru 6594.
 ** Dimension shown is for connection at the heat exchanger head. This must be piped to an F&T condensate trap. See PV 6590 and 6594 for sizes.
Electrical requirements: 120V, 1Ø, 60 Hz., 20 amps maximum, to a single point connection.
 Dimensions are in inches unless otherwise noted. Height to steam inlet and height to condensate connection are approximate dimensions.
 For standard and optional equipment, see form PV 8146.



PVI INDUSTRIES, LLC
 FORT WORTH, TX 76111
 (800) 784-8326 • www.pvi.com



PVI RESERVES THE RIGHT TO CHANGE THE DESIGN AND SPECIFICATION WITHOUT NOTICE.