

QuickDraw® STEAM

STORAGE-TYPE HOT WATER GENERATOR

AquaPLEX® STORAGE TANK (UNLINED DUPLEX ALLOY)

TANK SERIES 900 GALLON

| MODEL NUMBER | GPH RECOVERY and LB/HR STEAM REQUIRED @ 15 PSI STEAM TO THE INLET * | | A COLD INLET AND RETURN NPT | B HOT OUTLET NPT | C STEAM INLET NPT * (@ 15 psi) | D CONDENSATE TRAP CONNECTION NPT ** | E PULL SPACE FOR U-TUBE | RECOMMENDED F & T TRAP SIZE (@ 15 PSI) | SHIPPING WEIGHT LBS |
|--------------|---|---------------|-----------------------------|------------------|--------------------------------|-------------------------------------|-------------------------|--|---------------------|
| | 40°F to 120°F | 40°F to 140°F | | | | | | | |

SINGLE-WALL

| | | | | | | | | | | | |
|----------------|------|-------|------|-------|---|---|---------|-------|----|-------|------|
| 380 L 900A-QS | 520 | 360 | 380 | 330 | 3 | 3 | 1 | 3/4 | 33 | 3/4 | 2120 |
| 520 L 900A-QS | 700 | 480 | 520 | 450 | 3 | 3 | 1 | 3/4 | 45 | 3/4 | 2270 |
| 900 L 900A-QS | 1220 | 850 | 900 | 780 | 3 | 3 | 1-1/2 | 1 | 45 | 1-1/4 | 2320 |
| 1230 L 900A-QS | 1680 | 1160 | 1230 | 1070 | 3 | 3 | 2 | 1 | 57 | 1-1/2 | 2320 |
| 1780 L 900A-QS | 2420 | 1680 | 1780 | 1540 | 3 | 3 | PV 6589 | 1-1/4 | 45 | 1-1/2 | 2370 |
| 2280 L 900A-QS | 3100 | 2150 | 2280 | 1980 | 3 | 3 | 2-1/2 | 1-1/4 | 57 | 2 | 2420 |
| 3790 L 900A-QS | 4740 | 3300 | 3790 | 3300 | 3 | 3 | 2-1/2 | 2 | 57 | 2 | 2520 |
| | gph | lb/hr | gph | lb/hr | | | | | | | |

DOUBLE-WALL

| | | | | | | | | | | | |
|-----------------|------|-------|------|-------|---|---|-------|-------|----|-------|------|
| 330 L 900A-QSD | 440 | 310 | 330 | 280 | 3 | 3 | 1 | 3/4 | 33 | 3/4 | 2120 |
| 440 L 900A-QSD | 600 | 410 | 440 | 380 | 3 | 3 | 1 | 3/4 | 45 | 3/4 | 2270 |
| 830 L 900A-QSD | 1120 | 780 | 830 | 720 | 3 | 3 | 1-1/2 | 1 | 45 | 1-1/4 | 2370 |
| 1520 L 900A-QSD | 2060 | 1430 | 1520 | 1320 | 3 | 3 | 2 | 1-1/4 | 45 | 1-1/2 | 2470 |
| 1940 L 900A-QSD | 2640 | 1830 | 1940 | 1680 | 3 | 3 | 2-1/2 | 1-1/4 | 57 | 1-1/2 | 2470 |
| 2650 L 900A-QSD | 3600 | 2500 | 2650 | 2300 | 3 | 3 | 2-1/2 | 2 | 45 | 2 | 2570 |
| 3790 L 900A-QSD | 4740 | 3300 | 3790 | 3300 | 3 | 3 | 2-1/2 | 2 | 45 | 2 | 2770 |
| | gph | lb/hr | gph | lb/hr | | | | | | | |

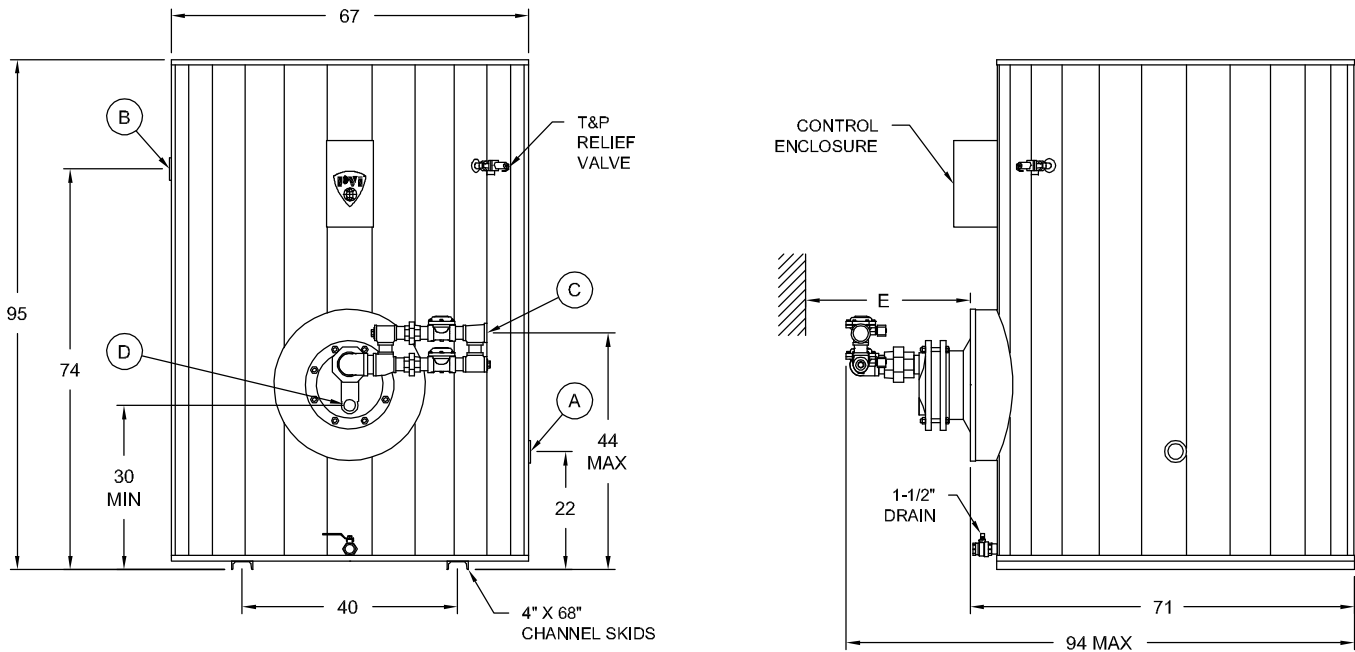
* For recoveries, steam flows, valves, and trap sizes at different steam pressures and temperature rises, refer to forms PV 6587 thru 6594.

** Dimension shown is for connection at the heat exchanger head. This must be piped to an F&T condensate trap. See PV 6590 and 6594 for sizes.

Electrical requirements: 120V, 1Ø, 60 Hz., 20 amps maximum, to a single point connection.

Dimensions are in inches unless otherwise noted. Height to steam inlet and height to condensate connection are approximate dimensions.

For standard and optional equipment, see form PV 8146.



PVI INDUSTRIES, LLC.
FORT WORTH, TX 76111
(800) 784-8326 • www.pvi.com



PVI RESERVES THE RIGHT TO CHANGE THE DESIGN AND SPECIFICATION WITHOUT NOTICE.