



QuickDraw® Steam Semi-instantaneous Hot Water Generator with AquaPLEX® Unlined Duplex Alloy Pressure Vessel

Model Number ▼	Gallon per Minute Recovery and lb/h Steam Flow (15 psi steam to the valve)						Dimensions in Inches					Approximate Shipping Weight (lbs.)
	40 - 120°F		40 - 140°F		40 - 160°F		A Cold Inlet Flanged	B Hot Outlet NPT	C	E* Steam Inlet @15 psig NPT	F** Condensate Piping Connection	
	gpm	lb/hr	gpm	lb/hr	gpm	lb/hr						

Single-wall

10 L 5A-IS	10	420	8	390	6	350	3	2	83	1	1-1/2	610
20 L 5A-IS	20	840	15	770	12	700	3	2	83	1-1/2	2	630
40 L 5A-IS	40	1680	30	1540	23	1390	3	2	83	2	3	680
60 L 5A-IS	60	2510	45	2300	34	2080	3	2	95	2-1/2	3	820
80 L 5A-IS	80	3350	59	3070	45	2770	3	3	83	2-1/2	4	790

Double-wall

10 L 5A-ISD	10	420	8	390	6	350	3	2	95	1	1-1/2	700
20 L 5A-ISD	20	840	15	770	12	700	3	2	95	1-1/2	2	760
40 L 5A-ISD	40	1680	30	1540	23	1390	3	2	95	2	3	860
60 L 5A-ISD	60	2510	45	2300	34	2080	3	2	83	2-1/2	4	910
80 L 5A-ISD	80	3350	59	3070	45	2770	3	3	95	2-1/2	4	1030

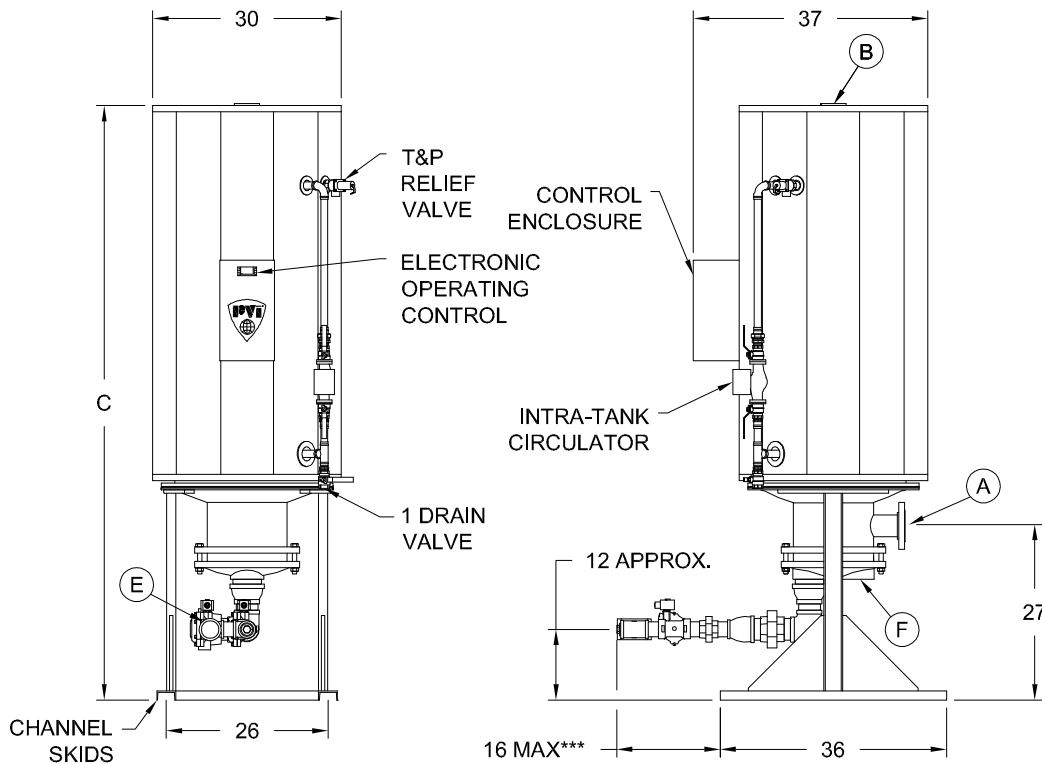
* Steam valve configuration vary with input.

** This dimension is the NPT piping connection at the bonnet and requires plumbing to a float and thermostatic trap.

*** Length varies according to heat exchanger and valve combinations, consult factory.

For recoveries, steam flows, valve size, and F&T trap size under differing steam pressures, refer to forms PV 6614 through PV 6617.

For standard and optional equipment, see form PV8160.



Electrical requirements:
120V, 1Ø, 60 Hz., 20 amps maximum,
to a single point connection.

PVI RESERVES THE RIGHT TO CHANGE THE DESIGN AND SPECIFICATION WITHOUT NOTICE.