

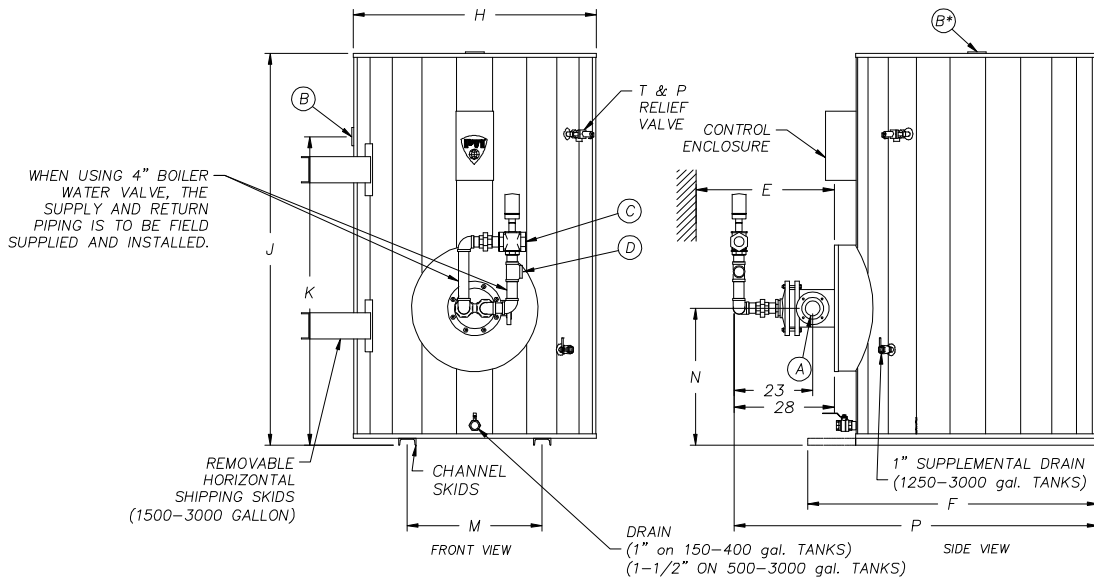
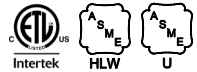


## AquaPLEX® WATER-to-WATER PACKAGED HOT WATER GENERATOR VERTICAL STORAGE TANKS – DIMENSIONS (inches)

GALLONS STORAGE ▼	Cold Inlet FLG	Hot Outlet NPT	Boiler Water Outlet	Boiler Water Inlet	Pull Space	Skid Length	Tank Diameter	Overall Height	Height to Hot Outlet	Height to Cold Inlet	Distance Between Skids	Overall Depth	Shipping Weight Lbs.	
	A	B	C	D	E	F	H	J	K	N	M	P		
150	3	2	Refer to Form PV 6909 for Single-wall Exchangers or form PV 6910 for Double-wall Exchangers	Refer to form PV 6903	Refer to form PV 6905	34x37	65	On top	27	21	80	910		
175	3	2				34x37	71	On top	27	21	80	980		
215	3	2				34x37	78	66	27	21	80	1070		
250	3	2				46	63	On top	31	31	Refer to form PV 6904	1040		
300	3	2				46	75	On top	31	31		1100		
400	3	2				46	87	70	31	31		1185		
500	3	3			Refer to Form PV 6909 for Single-wall Exchangers or form PV 6910 for Double-wall Exchangers	Refer to form PV 6903	54-1/2	56	78	59	32	31	89	1525
600	3	3					54-1/2	56	90	71	32	31	89	1750
750	3	3					68	67	83	63	34	40	99	1890
900	3	3					68	67	95	75	34	40	99	2120
1000	3	3					75	75	82	62	33	47	109	2925
1250	3	3					75	75	96	76	35	47	109	3160
1500	3	3					75	75	108	88	35	47	109	3375
1750	3	3					75	75	132	112	35	47	109	3815
2000	3	3					75	75	144	124	35	47	109	4290
2500	3	3	75	75			156	136	35	47	109	4555		
3000	3	3	75	75	180	160	35	47	109	4995				

\* Hot outlet on 150, 175, 250, 300 gal tanks.  
For larger storage capacities, consult factory.  
For standard and optional equipment, see form PV 8163.

**Electrical requirements:** Provide 115 V, 20 amps service to single point connection (sufficient for one control valve, control circuit and intra-tank circulator).



**PVI RESERVES THE RIGHT TO CHANGE THE DESIGN AND SPECIFICATION WITHOUT NOTICE.**



PVI Industries, LLC  
Fort Worth, TX • (800) 784-8326 • www.pvi.com