

MAXIM 3 Non-Condensing Water Heater

AQUAPLEX® STORAGE TANK (UNLINED DUPLEX ALLOY)

TANK SERIES 125 Gallon ■ 399 to 900 MBH

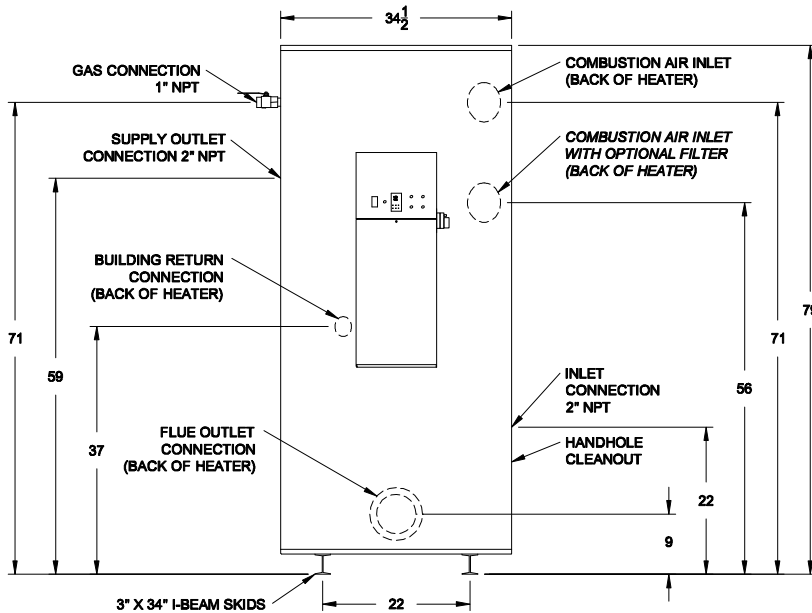
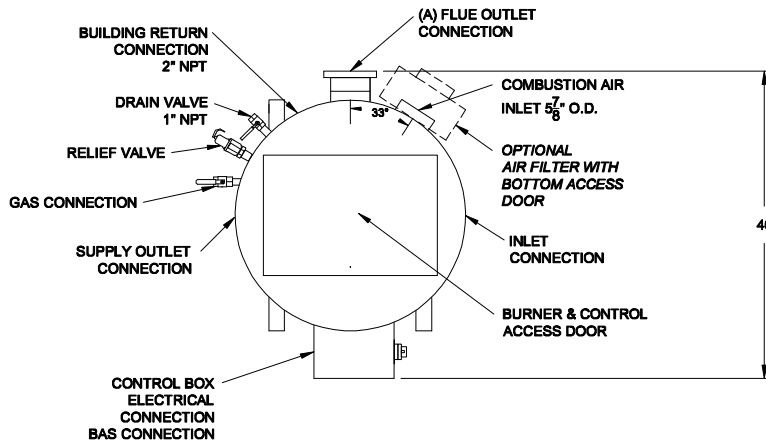
MODEL	BTU INPUT	GPH RECOVERY - Thermal Efficiency		A FLUE OUTLET CONNECTION	SHIPPING WEIGHT (LBS.)	OPERATING WEIGHT (LBS.)
		70° to 140°F ①	40° to 140°F ②			
40 L 125A-MXIF	399,000	575	402	7 7/8	1165	1870
50 L 125A-MXIF	500,000	720	504	7 7/8	1165	1870
75 L 125A-MXIF	750,000	1080	756	9 7/8	1260	1830
90 L 125A-MXIF	900,000	1297	908	9 7/8	1260	1830

① Recovery and thermal efficiency derived from DOE 10 CFR 431 testing requirements (ANSI Z21.10.3 @ 70°F to 140°F)

② Recovery and thermal efficiency based upon 40°F entering water temperature at full fire.

Dimensions are in inches unless otherwise specified.

For standard and optional equipment, see form PV 8215.



Standard Electrical
120V, 1Ø, 60 Hz., 13 amp circuit
Venting
Negative pressure Category I Type B vent should not be sized only upon vent connection diameter at the appliance. For proper vent sizing and design, refer to the National Fuel Gas Code. Use "FAN" rating.
OR
Positive pressure Category III or IV Stainless Steel venting listed by UL, ULC, ETL or CSA, refer to the Installation Manual.
Inlet Combustion Air
Up to 100 eq. ft. using 6" PVC or galvanized vent pipe. Longer lengths, ETL listed with larger diameters, see I&M.
Gas Pressure - Natural
Minimum inlet flow pressure: 4.5" W.C. Maximum static pressure: 14" W.C. For < 4.5" W.C., consult factory. For LP option, consult factory.
Minimum Service Clearances
18" from sides, 24" from front and top
Emissions
< 20 ppm NOx

PVI reserves the right to change the design and specification without notice.

PV 8216 04-2017



PVI INDUSTRIES, LLC
FORT WORTH, TEXAS 76111
www.pvi.com