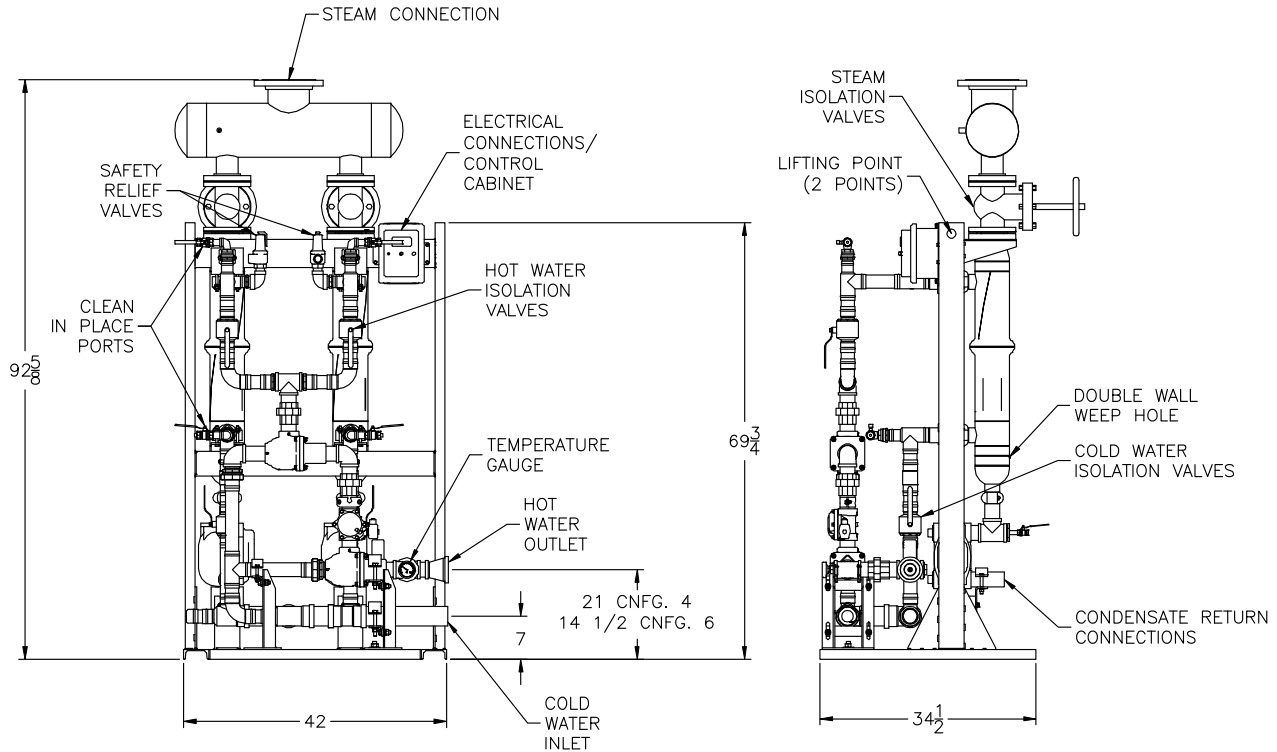


COBREX[®]

Double Wall Instantaneous Steam-to-Water Heater

Dimensions for Dual Heat Exchanger High-Output Models (dual exchangers operate in tandem to meet recovery (not redundant))

Configurations 4 and 6



4 gpm minimum recirculation flow through CCX required.
All dimensions are in inches.

Plumbing connections				
Product Configuration *	Cold Inlet NPT	Hot Outlet NPT	Steam Connection	Weight (lbs)
4	2"	2"	6"	825
6	3"	3"	6"	850

Consult factory for dimensional changes due to option additions.

Electrical requirements: 120V, 60 Hz, 9 amps service to a single-point connection.

* For product configuration, refer to performance documents PV8427, PV8428 and PV8429.

For standard and optional equipment list, refer to form PV8426.



PVI Industries, LLC
Engineered Water Heating Solutions[®]
www.pvi.com
Fort Worth, TX • 800-784-8326

PVI RESERVES THE RIGHT TO CHANGE THE DESIGN AND SPECIFICATION WITHOUT NOTICE.