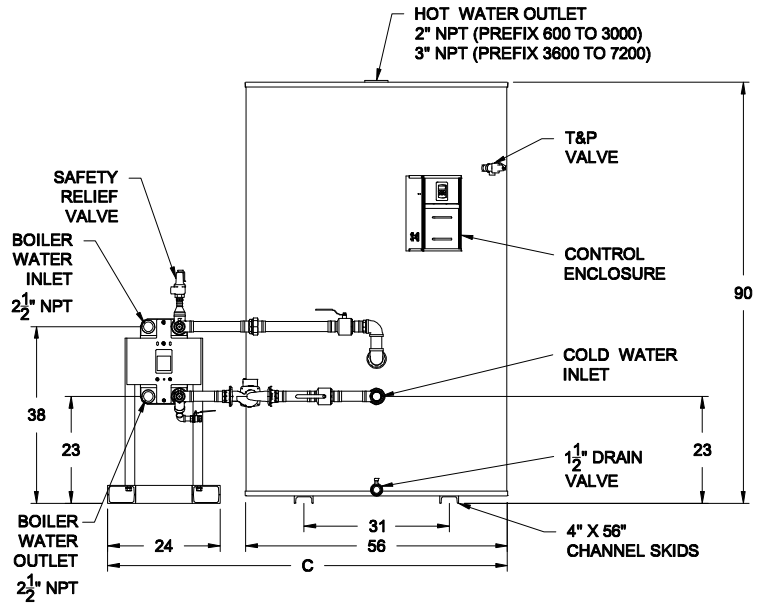
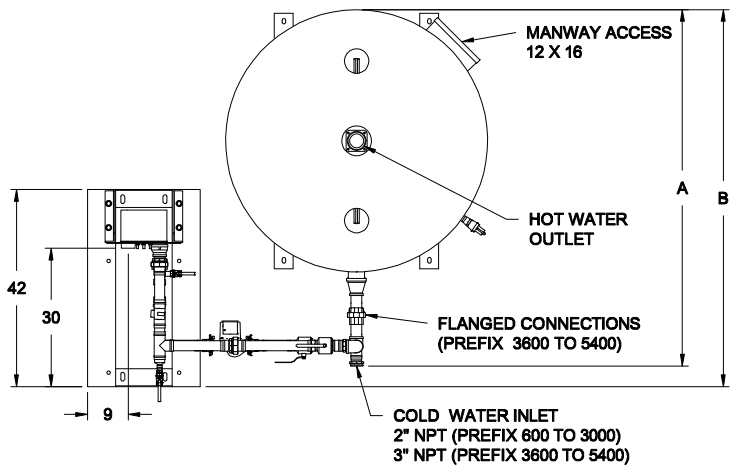


**AquaPLEX[®] Storage Tank (unlined duplex alloy)
with EZ PLATE[®] Boiler Water Heat Exchanger - Double-wall
600 Gallon Tank Series - Dimensions**

Model No.	Amps @120V ①	A	B	C	Shipping Weight Lbs.
600 L 600A-TRBPDW	4	75	80	85	1845
900 L 600A-TRBPDW	4	75	80	85	1880
1200 L 600A-TRBPDW	4	75	80	85	1885
1800 L 600A-TRBPDW	5	76	80	85	1915
2400 L 600A-TRBPDW	5	76	80	85	1975
3000 L 600A-TRBPDW	5	76	80	85	1985
3600 L 600A-TRBPDW	5	83	80	85	2000
4500 L 600A-TRBPDW	8	85	80	85	2030
5400 L 600A-TRBPDW	8	85	80	85	2100
7200 L 600A-TRBPDW	14	87	80	86	2260



Refer to PV 8601, PV 8602 and PV 8603 for information on heat exchanger recoveries, pressure drop and boiler water flow requirements with various entering boiler water temperatures and domestic water temperatures.

Refer to PV 8600 for standard and optional equipment.

① Optional boiler water valve adds 2 amps

Recommended service clearance is 18 inches on all sides.

Completed piping assembly is factory fit between the exchanger and tank and separated at unions (or flanges) for shipping. Tank and heat exchanger ship separately for field assembly to piping assembly.

PVI reserves the right to change the design and specification without notice.

