

EOS INTERFACE GUIDE, GATEWAY SETUP AND POINTS LIST

Installation and interface must be performed by a qualified controls technician.

IMPORTANT: THIS MANUAL CONTAINS INFORMATION REQUIRED FOR INSTALLATION, INTERFACE AND CONFIGURATION OF THIS EQUIPMENT. READ AND FOLLOW THE INFORMATION IN THIS MANUAL AND ALL OTHER PROVIDED INSTRUCTIONS, LABELS AND MARKINGS BEFORE INSTALLING, OPERATING OR SERVICING THIS UNIT.

Contents

OVERVIEW OF INTERFACE METHODS:	2
EOS MODBUS RTU PORT AND PROTOCOL	4
WIRING OF EOS TO BAS (Direct, no Gateway):	4
ITEMS REQUIRED FOR GATEWAY INTERFACE:	5
WIRING BAS TO GATEWAY AND THEN GATEWAY TO EOS:	6
GATEWAY CONFIGURATION CONNECTION:	6
CONFIGURE GATEWAY DIP SWITCHES:	7
CONFIGURE THE GATEWAY USING THE HTML INTERFACE:	8
CONFIRM OPERATION:	9
TROUBLESHOOTING GATEWAY:	9
HOOKUP OVERVIEW:	10
APPLICATION SPECIFICS:	11
POINTS LIST:	13
TYPICAL POINTS:	13
LIST OF ERRORS	16
ADVANCED POINTS LIST:	17

TO THE INSTALLER / CONTROLS INTEGRATOR: After installation and integration, these instructions must be given to the equipment user or left near the appliance.

SPECIAL INSTRUCTIONS TO THE OWNER: Retain this manual for future reference. These instructions contain important integration information that will help you in maintaining and operating this appliance.



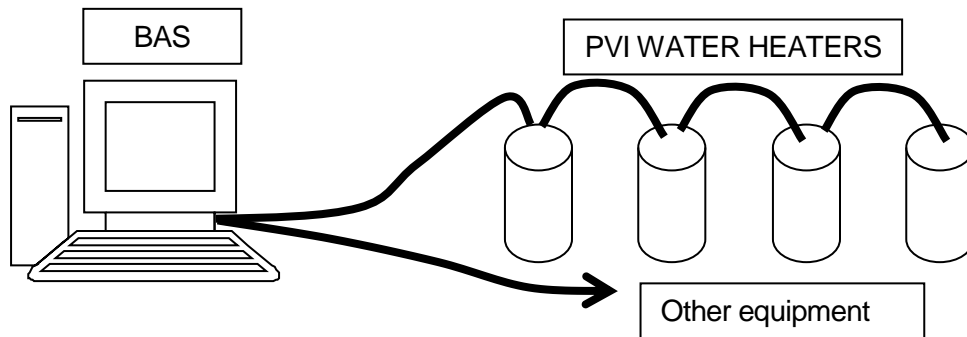
PVI INDUSTRIES, LLC - Fort Worth, Texas 76111 - Web www.pvi.com - Phone 1-800-433-5654

EOS INTERFACE GUIDE, GATEWAY SETUP AND POINTS LIST

OVERVIEW OF INTERFACE METHODS:

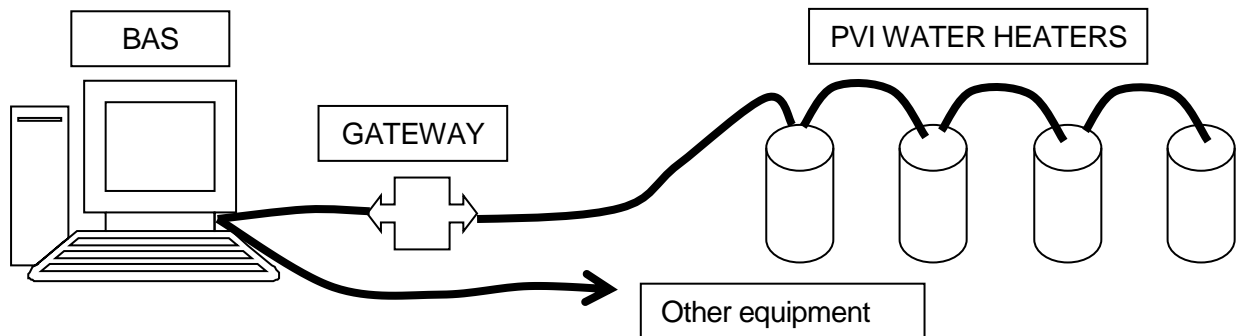
This document is a quick reference for connecting the EOS (BTCII) water heater control to a Building Automation System (BAS). Direct connection via MODBUS RTU or using a gateway to interface to protocols other than MODBUS RTU are the methods covered in this manual.

BAS to Heaters direct, using MODBUS RTU or MODBUS ASCII:



Building Automation System (BAS) connecting directly to water heaters using MODBUS RTU twisted pair wire. (Wiring is RS-485 physical layer.)

BAS to heaters using a Protocol Gateway:



Building Automation System (BAS) connecting to a PVI gateway. This can provide interface to BACNET MSTP, BACNET IP, LONWORKS, and MODBUS TCP (Wiring from gateway to heaters is RS-485 physical layer. Wiring from BAS to gateway will depend on Protocol.)

BAS to heaters using discrete connections:

This control and monitor of the heater using dry contacts. Typically the points are; the external ENABLE/DISABLE contacts, remote equipment contacts and the alarm contacts.

EOS INTERFACE GUIDE, GATEWAY SETUP AND POINTS LIST

EOS HEATER MODBUS SETTINGS:

The default (as it ships from factory) MODBUS Address is 1. Recommend starting at 1 and counting up. This example shows the settings for using a PVI gateway. If interfacing directly with MODBUS RTU, configure as required.

Home Button.
Return to the 'Home'
Screen from any
Screen from any
menu. Press and hold
for 3 seconds to
access the
programming menu



Steps to change or confirm MODBUS settings on heater:

- Enter the programming menus by holding the lower left button HOME
- Use the NEXT ITEM button to select the TOOL BOX menu
- Press the ENTER button in TOOL BOX menu
- Use the UP / DOWN arrows to change user to installer
- Hold the #4 button (On bottom next to ITEM BACK) until it shows ADV USER
- Press HOME button until it shows TOOLBOX / MENU
- Use the NEXT ITEM to get to NETWORK / MENU
- Press ENTER button
- You should only need to change the MODBUS ADDRESS, and only if you need it to be something other than the default of 1. Use the NEXT ITEM and arrows to configure the following parameters:
- ADDRESS: 1 (change to desired MODBUS address)
- DATA TYPE: RTU (Default and setting for PVI gateway)
- BAUD RATE: 19K2 (Default and setting for PVI gateway)
- PARITY: EVEN (Default and setting for PVI gateway)
- Exit by hitting the HOME button

EOS INTERFACE GUIDE, GATEWAY SETUP AND POINTS LIST

EOS MODBUS RTU PORT AND PROTOCOL

The MODBUS RTU protocol is well established industry protocol and technical references for this are readily available on the Internet.

Data Types Used

The BTCII EOS only uses two data types
Holding Registers (40001 – 49999) Read/Write
Input Registers (30001-39999) Read only

Other data types such as Coils are not implemented in the BTCII EOS control.
Only the data points in the POINTS LIST should be accessed.

Physical Layer RS-485

MODBUS RTU uses the physical layer RS-485

RS-485 (EIA-485): A 2 wire (twisted pair) multi drop network. Each device can send data by holding positive and negative voltage on the line and reversing polarity on the 2 wires. When no devices are transmitting, the line will be tri-state. The recommended arrangement of the wires is as a connected series of point-to-point (multi-dropped) nodes, i.e. a line or bus, not a star, ring, or multiply connected network. The number of devices that can be connected to a single line is defined in the RS-485 standard by the input impedance of 32 UNIT LOADs. The wire and circuits interfacing on this 2 wire connection is considered the PHYSICAL LAYER. (RS-485 is the same physical layer as used with BACNET MSTP.)

No provisions for biasing resistors or termination resistors are provided on the control. If required, this will need to be provided externally.

Note, the PVI gateway does provide biasing (default) and can provide a termination resistor.

WIRING OF EOS TO BAS (Direct, no Gateway):

On back side of the touch screen is 3 position screw terminals.

Field connection for BAS	BTCII (#1) Back of display	BTCII (#2) Back of display	Testing VDC	Results for proper hookup
RS 485 +	A(-)	A(-)	Positive lead	+ 0.100 To
RS R85 -	B(+)	B(+)	Negative lead	+ 5.500
GND	Gnd	Gnd		

Ensure the proper polarity, check with a Digital Volt Meter set to Volts DC. Take a reading at the back of the BTCII EOS display, from the A(-) Terminal to the B(+) Terminal. The A(-) should be the positive lead when connected.

EOS INTERFACE GUIDE, GATEWAY SETUP AND POINTS LIST

ITEMS REQUIRED FOR GATEWAY INTERFACE:

One or more water heaters with an BTCII EOS control (touch screen LCD)

Protonode Gateway with Power supply adapter (when ordering, please specify what protocol is required; BACNET MSTP, BACNET IP, LONWORKS or MODBUS TCP)

Protonode Gateway Manual (Covers general information for the gateway)

PV7069-EOS-INTERFACE.PDF Interface manual that covers specifics for interfacing with the BTCII EOS system. Also includes the points list for the BTCII EOS control system. (This document)

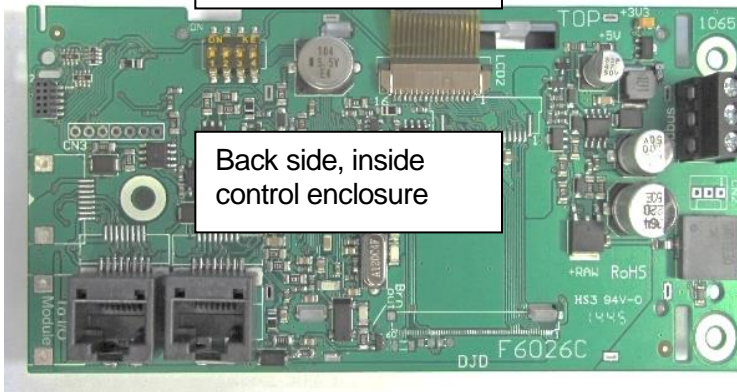
120VAC power outlet for the power supply.

Computer with web browser and Ethernet connection capability to configure gateway

Identify the equipment and confirm you have an BTCII EOS control. The heaters should have a touch screen control as shown below. The gateway is a grey module that has a wall wart style power supply.



Water Heater BTCII - EOS User Interface



Back side, inside control enclosure

Protocol Gateway



EOS INTERFACE GUIDE, GATEWAY SETUP AND POINTS LIST

WIRING BAS TO GATEWAY AND THEN GATEWAY TO EOS:

Each gateway has 3 connection points.

The 6 position terminal block contains connection for power and MODBUS RTU (going to heaters).

The Ethernet port is for configuration, BACNET IP, or MODBUS TCP.

The 3 or 2 pin terminal is for the BAS interface: BACNET MSTP, or LONWORKS.

Power Connection:

Gateway power supply, 6 position terminal +PWR, -PWR

Use supplied wall wart style power supply. 15VDC. Do not power other devices with same power supply.

If power adapter has not already been connected, cut and discard the connector on the end, strip and terminate the power adapter in the proper terminals. Verify polarity. If another supply is to be used, it must be isolated. Do not use 24VAC power from heater.

Gateway Connection to Heaters:

Wiring from Gateway to the heaters, use twisted pair wire.

Connector on the back side of the heater's LCD →

The wiring is standard 2 wire RS-485 wiring. You will connect all devices together in a daisy chain. We recommend the gateway to be at the start of this connection.



Gateway 6 Pos. terminal	BTCII (#1) Back of display	BTCII (#2) Back of display
Tx/+	A(-)	A(-)
Rx/-	B(+)	B(+)
GND	Gnd	Gnd

Building Automation Connection:

BAS protocol	Connection Port on Gateway	Labeled
BACNET MSTP	3 TERMINAL CONNECTOR	FIELD
BACNET IP	ETHERNET PORT	ETHERNET
LONWORKS	2 TERMINAL CONNECTOR	LonWorks
MODBUS TCP	ETHERNET PORT	ETHERNET

GATEWAY CONFIGURATION CONNECTION:

Both the LONWORKS and BACNET gateway have an Ethernet port. Connect the computer using a patch cable or cross-over cable to establish a direct connection to the gateway. Older units may require a cross-over cable or two patch cables with an Ethernet switch. If using BACNET IP or MODBUS TCP interface, connect the BAS Ethernet cable to the gateway when configuration is complete.

At this point, each heater and the gateway should all be powered, and have all wiring finished. The RUN LED will toggle every second to indicate the gateway is running.

EOS INTERFACE GUIDE, GATEWAY SETUP AND POINTS LIST

CONFIGURE GATEWAY DIP SWITCHES:

The ON position is toward the center of the module, and OFF is toward the edge of the module. Only the BACNET gateway requires dip switch settings. The BACNET gateway is used for MODBUS TPC also.

DIP SWITCHES S0-3 PROTOCOL

Set Protocol (BACNET and MODBUS gateway only):

The gateway protocol is determined on power up by looking at the “S” dip switches.

If the protocol is changed, the configuration/profiles must be cleared and reconfigured. This is done with the HTML interface. MODBUS RTU does not require a gateway.

LONWORKS: Configured in hardware, no need to adjust dip switches.

Protocol	S0	S1	S2	S3
BACNET IP	OFF	OFF	OFF	OFF
BACNET MSTP	ON	OFF	OFF	OFF
MODBUS TCP	OFF	ON	OFF	OFF
MODBUS RTU	ON	ON	OFF	OFF

DIP SWITCHES B0-4 BAUD

3PIN CONNECTOR TO BAS, Configure BAUD:

Default is 38400.

Configures the Baud rate for the 3 position terminal block.

This is the connection that will connect to the Building Automation System (BAS).

This is used only when the protocol is BACNET MSTP.

Baud	B0	B1	B2	B3
9600	ON	ON	ON	OFF
19200	OFF	OFF	OFF	ON
38400 *	ON	ON	OFF	ON
57600	OFF	OFF	ON	ON
76800	ON	OFF	ON	ON

A0-7 (BACNET MSTP) MAC ADDRESS:

Default is MAC address 3.

Configure the MAC address for the BACNET Gateway by summing the “A” dip switches that are ON.

MAC address range: 1 – 127

1	2	4	8	16	32	64		<-sum for address	
A0	A1	A2	A3	A4	A5	A6	A7	Address	
OFF	OFF	OFF	OFF	OFF	OFF	OFF	OFF	0	Invalid
ON	OFF	OFF	OFF	OFF	OFF	OFF	OFF	1	
OFF	ON	OFF	OFF	OFF	OFF	OFF	OFF	2	
ON	ON	OFF	OFF	OFF	OFF	OFF	OFF	3*	Default
OFF	OFF	ON	OFF	OFF	OFF	OFF	OFF	4	
ON	OFF	ON	OFF	OFF	OFF	OFF	OFF	5	
OFF	ON	ON	OFF	OFF	OFF	OFF	OFF	6	
ON	ON	ON	OFF	OFF	OFF	OFF	OFF	7	
OFF	OFF	OFF	ON	OFF	OFF	OFF	OFF	8	
ON	OFF	OFF	ON	OFF	OFF	OFF	OFF	9	
OFF	ON	OFF	ON	OFF	OFF	OFF	OFF	10	
ON	ON	ON	ON	ON	ON	ON	OFF	127	

EOS INTERFACE GUIDE, GATEWAY SETUP AND POINTS LIST

CONFIGURE THE GATEWAY USING THE HTML INTERFACE:

This section will provide the parameters required for the BTCII EOS control. For more details of the gateway, consult the gateway manual. Connect your computer's Ethernet port to the Ethernet port of the gateway. Using a web browser, browse to the gateway at IP address: **192.168.1.24** default (If you have changed the IP address, go to the appropriate address.)

If the device IP address has been changed and is not known, a utility is available from Feildserver.com. Contact Fieldserver for more information.

Menu options vary depending on if you are configuring a LONWORKS gateway, BACNET Gateway set for BACNET IP, a BACNET gateway set for BACNET MSTP, or a BACNET gateway set for MODBUS TCP.

Using your browser, set the following and SUBMIT after each change.

MODBUS RTU Baud Rate: 19200 (EOS uses 19200 by default, recommended)

MODBUS RTU Parity: EVEN (Recommended setting)

MODBUS RTU Data Bits: 8 (Must use 8 data bits for EOS)

MODBUS RTU Stop Bits: 1 (Must be 1 with PARITY, if parity = NONE, must be 2 for EOS)

(BACNET options)

BACNET Network Number: Must be unique network number on BACNET network

BACNET Node Offset: This will be used to create the DEVICE INSTANCE. Sum the device MODBUS Address and this number. Example 50000 Node Offset + MODBUS address 1 = 50001 Device Instance. Each MODBUS device will have its own Device Instance number.

(BACNET MSTP option)

BACNET MSTP Max Master: 127

(BACNET IP option)

BACNET IP Port: 47808 (Default)

BACNET COV: COV Disable

(BACNET MSTP option)

BACNET BBMD: - (Default "-", enabling this is an advanced feature, not recommended)

BACNET Router: NO for 1 water heater, YES for multiple water heaters.

SELECT THE DEVICE TYPE (BACNET & LONWORKS):

Press the **ADD** button, under **Node ID** enter the MODBUS address of the first heater. Typically you will have the nearest heater setup as MODBUS address 1, and the next heater MODBUS address 2. All heaters ship from factory with MODBUS Address set to 1. Each heater must have a unique MODBUS address. (See previous section **Setup heater MODBUS address**)

Under **Current profile**, select the proper interface for the EOS water heater control.

For BACNET Gateway: Select

BAC_IP EOS Water Heater for BACNET IP

BAC_MSTP EOS Water Heater for BACNET MSTP

For LONWORKS Gateway: Select **LON EOS Water Heater**

Press the **Submit** button.

Add additional devices as required.

After adding all devices, restart the gateway by clicking the **SYSTEM RESTART** button.

EOS INTERFACE GUIDE, GATEWAY SETUP AND POINTS LIST

CONFIRM OPERATION:

Heater Communication:

Communication between gateway and heaters is evident by rapid flashing of the TX and RX LEDs on the gateway. If only the TX is flashing (may be as slow as 30 seconds between flashes), that will indicate no response from the heaters.

Building Automation System Communication:

Using the HTML interface, you can confirm some operations and under USER MESSAGES, confirm there are no errors messages. At this point, the BAS will need to discover the gateway and implement the points into its integration.

TROUBLESHOOTING GATEWAY:

- ERR Red LED on
 - Gateway is reporting an error.
 - Connect to gateway with HTML interface to view error messages
- PWR LED not on
 - Confirm power on +PWR and –PWR
- TX & RX not flashing
 - Confirm connections to heaters and MODBUS addressing
 - Confirm gateway has been configured
- TX flashing, RX not flashing
 - Gateway is talking to EOS, but not getting response from EOS. Confirm wiring, confirm EOS is configured to proper address, Baud, Parity, Stop bits.

Verify polarity of all connections:

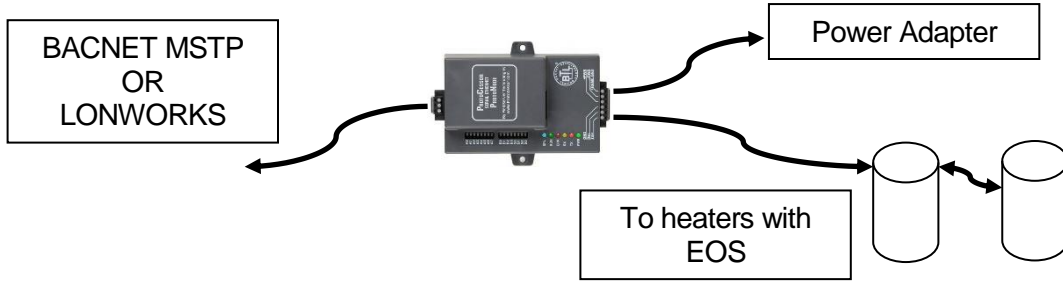
Set a Digital Volt Meter to read DC Volts. (Capable of reading less than 1.0VDC)

Pos. (red) Probe	Neg. (black) Probe	Min	Max	Actual Reading
Gateway 6 pin terminal block				
+PWR	-PWR	+9.0VDC	+30VDC	
Tx/+	Rx/-	+0.1VDC	+5.5VDC	
Gateway 3 pin terminal block (BACNET MSTP only)				
RS 485 +	RS 485 -	+0.1VDC	+5.5VDC	
BTCII 3 pin terminal block (Each heater)				
A(-)	B(+)	+0.1VDC	+5.5VDC	
A(-)	B(+)	+0.1VDC	+5.5VDC	
A(-)	B(+)	+0.1VDC	+5.5VDC	
A(-)	B(+)	+0.1VDC	+5.5VDC	
A(-)	B(+)	+0.1VDC	+5.5VDC	

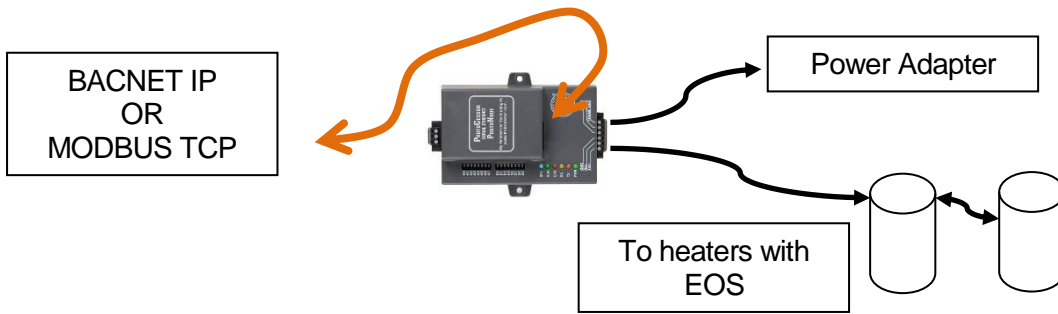
EOS INTERFACE GUIDE, GATEWAY SETUP AND POINTS LIST

HOOKUP OVERVIEW:

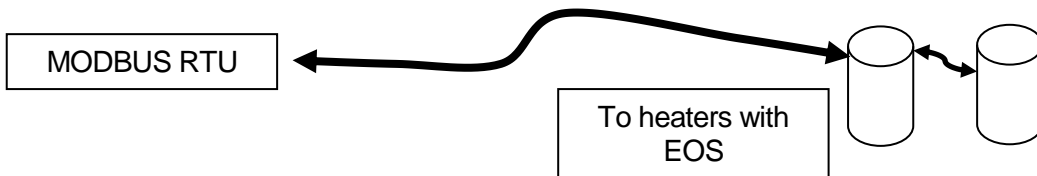
BACNET MSTP or LONWORKS



BACNET IP or MODBUS TCP



MODBUS RTU Direct Connect



EOS INTERFACE GUIDE, GATEWAY SETUP AND POINTS LIST

APPLICATION SPECIFICS:

Each product that uses the BTCII EOS control may have subtle differences. The following products address the important information regarding each device.

Conquest 100 Gallon (199 – 299) & 130 gallon 399:

Model Numbers: 20 L 100A-GCL, 25 L 100A-GCL, 30 L 100A-GCL, 40 L 130A-GCL

Ext Enable: Terminals R1 – R2, Jumper to enable. Heater ships with jumper on this. An external enable/disable can be attached to this. You can monitor the state of this input. 1 = enabled.

Upper Tank Temp: is a temperature probe in the top of the tank.

High Limit Temp: is a 2nd sensor in the same mechanical probe as the **Upper Tank Temp** probe. This is used as a safety.

Lower Tank Temp: Temperature of the mid-section of the tank, this sensor controls the agitator pump.

Vent Temp: Temperature of the Flue gasses exiting the heater.

Modulation: Not used on this equipment.

Pump Status: This is the agitator pump ON/OFF.

Pump Runtime: Hours on for agitator pump.

Discrete connections:

Enable/Disable: R1 – R2 (Input to heater) Closed = ENABLE.

Alarm: A1 & A2 (Output from Heater) Closed = ALARM.

Remote Equipment / Burner ON: P1 – P2 (Output from Heater) Closed – Heater is heating.

Remote Proving: C1 – C2 (Input to heater).

- Closed = Remote device is ready, it is OK to operate the burner.
- Open = Remote device is not ready. If the heater has a call for heat, this will cause an error if not resolved within a few minutes.

Conquest 130 Gallon (500 – 800):

Model Numbers: 50 L 130A-GCML, 60 L 130A-GCML, 70 L 130A-GCML, 80 L 130A-GCML

Ext Enable: Terminals R1 – R2, Jumper to enable. Heater ships with jumper on this. An external enable/disable can be attached to this. You can monitor the state of this input. 1 = enabled.

Upper Tank Temp: is a temperature probe in the top of the tank.

High Limit Temp: is a 2nd sensor in the same mechanical probe as the **Upper Tank Temp** probe. This is used as a safety.

Lower Tank Temp: Temperature of the mid-section of the tank, this sensor controls the agitator pump.

Vent Temp: Temperature of the Flue gasses exiting the heater.

Modulation: Represents signal sent to fan motor.

Pump Status: This is the agitator pump ON/OFF.

Pump Runtime: Hours on for agitator pump.

Discrete connections:

Enable/Disable: R1 – R2 (Input to heater) Closed = ENABLE.

Alarm: A1 & A2 (Output from Heater) Closed = ALARM.

Remote Equipment / Burner ON: P1 – P2 (Output from Heater) Closed – Heater is heating.

Remote Proving: C1 – C2 (Input to heater).

- Closed = Remote device is ready, it is OK to operate the burner.
- Open = Remote device is not ready. If the heater has a call for heat, this will cause an error if not resolved within a few minutes.

EOS INTERFACE GUIDE, GATEWAY SETUP AND POINTS LIST

Power VTX:

Model Numbers: 50 L 225A-PVX, 75 L 225A-PVX, 100 L 225A-PVX

Ext Enable: Terminals R1 – R2, Jumper to enable. Heater ships with jumper on this. An external enable/disable can be attached to this. You can monitor the state of this input. 1 = enabled.

Upper Tank Temp: is a temperature probe in the top of the tank.

High Limit Temp: is a 2nd sensor in the same mechanical probe as the **Upper Tank Temp** probe. This is used as a safety.

Lower Tank Temp: Temperature of the mid-section of the tank, this sensor controls the integral tank circulator pump.

Vent Temp: Temperature of the Flue gasses exiting the heater.

Modulation: Represent signal sent to fan motor.

Pump Status: This is the agitator pump ON/OFF.

Pump Runtime: Hours on for agitator pump.

Discrete connections:

Enable/Disable: R1 – R2 (Input to heater) Closed = ENABLE.

Alarm: A1 & A2 (Output from Heater) Closed = ALARM.

Remote Equipment / Burner ON: P1 – P2 (Output from Heater) Closed – Heater is heating.

Remote Proving: C1 – C2 (Input to heater).

- Closed = Remote device is ready, it is OK to operate the burner.
- Open = Remote device is not ready. If the heater has a call for heat, this will cause an error if not resolved within a few minutes.

EOS INTERFACE GUIDE, GATEWAY SETUP AND POINTS LIST

POINTS LIST:

The gateway will provide a full points list, including typical points and advanced points. Normal interface will only require the TYPICAL POINTS. For future expansion and custom applications, many points are provided designated as ADVANCED POINTS and not advised to be used in normal integration. The Advanced Points are present for the purpose of future development and custom applications. Please consult factory if any points in the ADVANCED POINTS LIST are required.

Key:

LONWORKS shows multiple devices connected with a device number suffix, (#) represent the device. MODBUS address with “:” to designate single bit usage of register. Number following colon represents bit location, 0 is the least significant bit.

Point Name	Read/Write	Short Description	
<i>MODBUS</i>	Register Type	Address Offset	MODBUS Address
<i>BACNET</i>	BACNET Name	Object Instance	BACNET Units
<i>LONWORKS</i>	Lon Read name_#	Lon Write name_#	Lon Units
Notes			

TYPICAL POINTS:

The points that are typically used to interface with the heater.

TYPICAL POINTS:

Enable	Read/Write	Enable Heater 1=on 0 = off	
<i>MODBUS</i>	Holding Register	100	40101
<i>BACNET</i>	Enable	40101	
<i>LONWORKS</i>	nviEnable_#	nvoEnable_#	
Note: This can be used to prevent the heater from heating via communication. 0 = off, 1 = on			

Heater Setpoint Occ	Read/Write	Water Heater Setpoint Occ	
<i>MODBUS</i>	Holding Register	101	40102
<i>BACNET</i>	Enable	40102	Deg-F
<i>LONWORKS</i>	nvoHtSPOcc_#	nviHtSPOcc_#	Deg_F
Note: This is the setpoint for the heater. Signed 16 bit integer			

Heater Setpt UnOcc	Read/Write	Heater Setpt UnOcc	
<i>MODBUS</i>	Holding Register	102	40103
<i>BACNET</i>	Heater Setpt UnOcc	40103	Deg-F
<i>LONWORKS</i>	nvoHtSPUnOcc_#	nviHtSPUnOcc_#	Deg_F
Note: Setpoint when scheduled setback is active, typically not used with water heaters.			

Ext Enable	Read Only	External Enable	
<i>MODBUS</i>	Input Register	15	30016
<i>BACNET</i>	Ext Enable	30016	
<i>LONWORKS</i>	nvoExtEnable_#		
Note: Input on J1-9. With signal on terminal J1-9, the heater is enabled to operate. To discretely disable the heater, open the connection between J1-10 and J1-9.			

EOS INTERFACE GUIDE, GATEWAY SETUP AND POINTS LIST

TYPICAL POINTS:

Ignition Status	Read Only	Ignition 0=Idle 3=Burn 5=Fail	
<i>MODBUS</i>	Input Register	101	30102
<i>BACNET</i>	Ignition Status	30102	
<i>LONWORKS</i>	nvolgnStatus_#		
Note: This goes through the cycle of the burner. 0=IDLE, 1=PREPurge, 2=IGNition, 3=BURNer ON, 4=postPURG, 5=FAIL			

Upper Tank Temp	Read Only	Top of Tank Temperature	
<i>MODBUS</i>	Input Register	102	30103
<i>BACNET</i>	Upper Tank Temp Cur	30103	Deg-F
<i>LONWORKS</i>	nvoUpTkTmpCr_#		Deg_F
Note: Typically this will be the probe at the top of the tank. Terminal J7-4 & J7-3 common. Signed 16 bit integer. This probe has a 2 nd sensor, see High Limit Temp.			

Lower Tank Temp	Read Only	Lower Tank Temperature	
<i>MODBUS</i>	Input Register	105	30106
<i>BACNET</i>	Lower Tank Temp Cur	30106	Deg-F
<i>LONWORKS</i>	nvoLoTkTmpCr_#		Deg_F
Note: Typically this will be the temperature probe at the lower section of the Tank. J9-3 & J9-1. Signed 16 bit integer.			

Vent Temp	Read Only		
<i>MODBUS</i>	Input Register	108	30109
<i>BACNET</i>	Vent Temp Cur	30109	Deg-F
<i>LONWORKS</i>	nvoVentTmpCr_#		Deg_F
Note: Typically this is the temperature probe at the flue vent. Used on some products to monitor the flue gas temperature exiting the heater. J9-4 & J9-2. Signed 16 bit integer			

High Limit Temp	Read Only	Top of Tank 2nd Temperature	
<i>MODBUS</i>	Input Register	111	30112
<i>BACNET</i>	High Limit Temp	30112	Deg-F
<i>LONWORKS</i>	nvoHiLimTmp_#		Deg_F
Note: This is the High Temperature Limit, this is a 2 nd sensor in the same probe as the Upper Tank Temp. Sensor connections J7-1 and J7-3 common. Signed 16 bit integer			

Modulation	Read Only	Rate between 0-100 to represent modulation	
<i>MODBUS</i>	Input Register	112	30113
<i>BACNET</i>	Modulation	30113	
<i>LONWORKS</i>	nvoModul_#		
Note: Provide a number to represent modulation. 0-100			

Flame Current	Read Only	Flame Current for proof of flame	
<i>MODBUS</i>	Input Register	113	30114
<i>BACNET</i>	Flame Current	30114	
<i>LONWORKS</i>	nvoFlmCurr_#		
Note: Returns a number that represents approximate flame current. Flame current is used to verify a flame is present, or loss of flame. 10 = 1µA, or 0.000001 Amps 40 = 4µA, or 0.000004 Amps			

EOS INTERFACE GUIDE, GATEWAY SETUP AND POINTS LIST

TYPICAL POINTS:

Burner Runtime	Read Only	Burner Runtime Hours 0-65535	
<i>MODBUS</i>	Input Register	114	30115
<i>BACNET</i>	Burner Runtime	30115	
<i>LONWORKS</i>	nvoBrnRunTm_#		
Note: Number of hours the burner has been enabled. Once it reaches 65536 it rolls to zero. (65535 hours is about 7 ½ years of burner enabled time) Unsigned 16 bit integer			

Burner Cycles	Read Only	Number of burner cycles 0-65535	
<i>MODBUS</i>	Input Register	115	
<i>BACNET</i>	Burner Cycles	30116	
<i>LONWORKS</i>	nvoBrnCyc_#		
Note: Each time the control attempts to start the burner, this counter is incremented. Once the counter reaches 65535, it will roll over to zero on next attempt.			

Pump Status	Read Only	Pump Status ON/OFF	
<i>MODBUS</i>	Input Register	116	30117
<i>BACNET</i>	Pump Status	30117	
<i>LONWORKS</i>	nvoPmpStat_#		
Note: Relay 3 status. J14-2.(J14-5 Common) Typically used for pump 1 = ON, 0 =OFF			

Pump Runtime	Read Only	Hours for Relay 3, Pump Runtime Hours	
<i>MODBUS</i>	Input Register	117	30118
<i>BACNET</i>	Pump Runtime	30118	
<i>LONWORKS</i>	nvoPmpRunTm_#		
Note: Total hours pump has been enabled. 0-65535 hours, rolls over to zero. (Hours for Relay 3), Unsigned 16 bit integer			

Com Status	Read Only	Communication Status bit	
<i>MODBUS</i>	Input Register	NA	NA
<i>BACNET</i>	Gateway_EOS_ComStatus	200	
<i>LONWORKS</i>	nvoGWEOS_Com_#		
Note: This point is not generated by the heater; it is generated internally by the gateway. It is a status of the communication connection between the gateway and the heater. If active (GOOD), the gateway is talking to the heater. If inactive (NOT_PRESENT) then the gateway does not have good communication with the heater. This point may take up to 3 minutes to register properly after communication is established or interrupted. If this value if reading NOT_PRESENT, then no all over values are suspect, as the device is not communicating. Generally the Gateway will hold the last value received. The only way to ensure you have the current values from the heater is to verify this point is ACTIVE as well.			

EOS INTERFACE GUIDE, GATEWAY SETUP AND POINTS LIST

Current Error	Read Only	Current Error Code	
<i>MODBUS</i>	Input Register	200	30201
<i>BACNET</i>	Current Error	30201	
<i>LONWORKS</i>	nvoCurrError_#		
Note: Error code for the latest error. See error code list.			

Error History1 - 15	Read Only	Error History Error Code	
<i>MODBUS</i>	Input Register	201-215	30202 - 30216
<i>BACNET</i>	Error History1 to 15	30202 - 30216	
<i>LONWORKS</i>	nvoErrHist1 to 15_#		
Note: Error code for the latest error. See error code list			

LIST OF ERRORS

Error Codes			
<i>ERROR CODES:</i>			
Code	Description		
0	No Error		
Control Display Errors (Errors generated from the control touch screen interface module)			
1	EEPROM	4	DHW Sensor
2	Outdoor Sensor	5	Vent Limiting
3	Supply Sensor	6	FTBus Communication
<i>PIM Errors (Errors generated by the PIM module)</i>			
7	LWCO	17	Vent Hi-Limit
8	Remote Proof	18	Boiler/Tank Hi-Limit
9	Air Pressure	19	False Flame
10	Low Gas Pressure	20	OEM Card
11	Boiler Outlet/Tank Top Sensor	21	Internal Failure
12	Boiler Inlet/Tank Bottom Sensor	22	Hi-Delta
13	Vent Sensor	23	Low HSI
14	Hi-Limit Sensor	24	Low Voltage
15	Ignition Failure	25	Blower Speed
16	Flame Loss	26	High Gas Pressure
<i>tN4 Errors (Related to the communication links between multiple heaters in a linked system)</i>			
27	Master Lost	29	Device Duplicate
28	Device Lost	30	Device Error

EOS INTERFACE GUIDE, GATEWAY SETUP AND POINTS LIST

ADVANCED POINTS LIST:

The following points are for future expansion and custom applications. Before implementation, consult factory to confirm proper use and operation.

Advanced Points List:

A_B_Setpoint	Read/Write	Boiler Setpoint	
<i>MODBUS</i>	Holding Register	0	40001
<i>BACNET</i>	A_B_Setpoint	40001	Deg-F
<i>LONWORKS</i>	nvoA_B_SP_#	nviA_B_SP_#	Deg_F
Note: Boiler Setpoint. Signed 16 bit integer			

A_Sanitation Enable	Read/Write	Enable Sani 1=on 0 = Off	
<i>MODBUS</i>	Holding Register	103	40104:0
<i>BACNET</i>	A_Sanitation Enable	40104	
<i>LONWORKS</i>	nvoA_SanEnbl_#	nviA_SanEnbl_#	
Note: Enable Sanitation mode 1=on 0 = Off			

A_DWH Setpoint	Read/Write	Boiler DHW Setpoint	
<i>MODBUS</i>	Holding Register	1	40002
<i>BACNET</i>	A_DWH Setpoint	40002	Deg-F
<i>LONWORKS</i>	nvoA_DWHSP_#	nviA_DWHSP_#	Deg_F
Note: Boiler DHW Setpoint, signed 16 bit integer			

A_Pump	Read/Write	Pump 1=on 0=Auto	
<i>MODBUS</i>	Holding Register	2	40003:0
<i>BACNET</i>	A_Pump	40003	
<i>LONWORKS</i>	nvoA_Pump_#	nviA_Pump_#	
Note: Pump 1=on 0=Auto, Relay 3 (J14-2)			

A_AuxPump	Read/Write	DHW Sani Pump 1=on 0=Auto	
<i>MODBUS</i>	Holding Register	3	40004:0
<i>BACNET</i>	A_AuxPump	40004	
<i>LONWORKS</i>	nvoA_AuxPump_#	nviA_AuxPump_#	
Note: DHW Sani Pump 1=on 0=Auto, Relay 1 (J14-1)			

A_Setback SP Occ	Read/Write	Setback Setpoint Occ	
<i>MODBUS</i>	Holding Register	104	40105
<i>BACNET</i>	A_Setback SP Occ	40105	Deg-F
<i>LONWORKS</i>	nvoA_StbSPOc_#	nviA_StbSPOc_#	Deg_F
Note: Setback Setpoint Occ			

A_Setback SP UnOcc	Read/Write	Setback Setpoint UnOcc	
<i>MODBUS</i>	Holding Register	105	40106
<i>BACNET</i>	A_Setback SP UnOcc	40106	Deg-F
<i>LONWORKS</i>	nvoA_StbSPUn_#	nviA_StbSPUn_#	Deg_F
Note: Setback Setpoint UnOcc			

A_WWSD Occ	Read/Write	Setback WWSD Occ	
<i>MODBUS</i>	Holding Register	106	40107
<i>BACNET</i>	A_WWSD Occ	40107	Deg-F
<i>LONWORKS</i>	nvoA_WWSDOcc_#	nviA_WWSDOcc_#	Deg_F
Note: Setback WWSD Occ			

EOS INTERFACE GUIDE, GATEWAY SETUP AND POINTS LIST

Advanced Points List:

A_WWSD UnOcc	Read/Write	Setback WWSD UnOcc	
<i>MODBUS</i>	Holding Register	107	40108
<i>BACNET</i>	A_WWSD UnOcc	40108	
<i>LONWORKS</i>	nvoA_IDHWE nb_#	nviA_IDHWE nb_#	
Note: Setback WWSD UnOcc			

A_IDHW Enable	Read/Write	IDHW Enable 1=on 0 = Off	
<i>MODBUS</i>	Holding Register	108	40109
<i>BACNET</i>	A_IDHW Enable	40109	
<i>LONWORKS</i>	nvoA_IDHWSPO_#	nviA_IDHWSPO_#	
Note: IDHW Enable 1=on 0 = Off			

A_IDHW SP Occ	Read/Write	Boiler IDHW Setpoint Occ	
<i>MODBUS</i>	Holding Register	109	40110
<i>BACNET</i>	A_IDHW SP Occ	40110	
<i>LONWORKS</i>	nvoA_IDHWSPU_#	nviA_IDHWSPU_#	
Note: Boiler IDHW Setpoint Occ			

A_IDHW SP UnOcc	Read/Write	Boiler IDHW Setpoint UnOcc	
<i>MODBUS</i>	Holding Register	110	40111
<i>BACNET</i>	A_IDHW SP UnOcc	40111	
<i>LONWORKS</i>	nvoA_DDHWSPU_#	nviA_DDHWSPU_#	
Note: Boiler IDHW Setpoint UnOcc			

A_DDHW SP Occ	Read/Write	DDHW Setpoint Occ	
<i>MODBUS</i>	Holding Register	111	40112
<i>BACNET</i>	A_DDHW SP Occ	40112	
<i>LONWORKS</i>	nvoA_DDHWSPU_#	nviA_DDHWSPU_#	
Note:			

A_DDHW SP UnOcc	Read/Write	Boiler DDHW Setpoint UnOcc	
<i>MODBUS</i>	Holding Register	112	40113
<i>BACNET</i>	A_DDHW SP UnOcc	40113	
<i>LONWORKS</i>	nvoA_DDHWSPU_#	nviA_DDHWSPU_#	
Note:			

A_Pool SP Occ	Read/Write	Boiler Pool Setpoint Occ	
<i>MODBUS</i>	Holding Register	113	40114
<i>BACNET</i>	A_Pool SP Occ	40114	
<i>LONWORKS</i>	nvoA_PoolSPO_#	nviA_PoolSPO_#	
Note:			

A_Pool SP UnOcc	Read/Write	Boiler Pool Setpoint UnOcc	
<i>MODBUS</i>	Holding Register	114	40115
<i>BACNET</i>	A_Pool SP UnOcc	40115	
<i>LONWORKS</i>	nvoA_PoolSPU_#	nviA_PoolSPU_#	
Note:			

EOS INTERFACE GUIDE, GATEWAY SETUP AND POINTS LIST

Advanced Points List:

A_Outdoor Temp Cur	Read Only	Outdoor Temperature	
<i>MODBUS</i>	Input Register	1	30002
<i>BACNET</i>	A_Outdoor Temp Cur	30002	
<i>LONWORKS</i>	nvoA_OutTpCr_#		
Note: J2-5,6 ODR Sensor			

A_Supply Temp Cur	Read Only	HWS Header Temperature EXT	
<i>MODBUS</i>	Input Register	4	30005
<i>BACNET</i>	A_Supply Temp Cur	30005	
<i>LONWORKS</i>	nvoA_SupTpCr_		
Note: J2-3,4 SYS Sensor			

A_Alert Status	Read Only	Alert Relay ALARM ON ANY 1=ON	
<i>MODBUS</i>	Input Register	12	30013
<i>BACNET</i>	A_Alert Status	30013	
<i>LONWORKS</i>	nvoA_AltStat_		
Note: Status of Alarm contact J1-1,2			

A_Target Temp	Read Only	Target Temperature after adj	
<i>MODBUS</i>	Input Register	0	30001
<i>BACNET</i>	A_Target Temp	30001	Deg-F
<i>LONWORKS</i>	nvoA_TrgtTmp_#		Deg_F
Note:			

A_DHW Temp Cur	Read Only	DHW Temperature EXT	
<i>MODBUS</i>	Input Register	7	30008
<i>BACNET</i>	A_DHW Temp Cur	30008	Deg-F
<i>LONWORKS</i>	nvoA_DHWTPCr_#		Deg_F
Note: J2-1,2 DHW Sensor			

A_AUX Pump Stat	Read Only	Auxiliary Pump Status 1=ON	
<i>MODBUS</i>	Input Register	10	30011
<i>BACNET</i>	A_AUX Pump Stat	30011	
<i>LONWORKS</i>	nvoA_AUXPpSt_#		
Note: Status of Relay 1 (J14-1)			

A_AUX Pump RTime	Read Only	Auxiliary Pump Runtime Hours	
<i>MODBUS</i>	Input Register	11	30012
<i>BACNET</i>	A_AUX Pump RTime	30012	Hours
<i>LONWORKS</i>	nvoA_AUXPpRT_#		Hours
Note: Hours on pump Relay 1			

A_Setback Status	Read Only	Setback 0=Occ 1 = UnOcc	
<i>MODBUS</i>	Input Register	13	30014
<i>BACNET</i>	A_Setback Status	30014	
<i>LONWORKS</i>	nvoA_SetbkSt_#		
Note:			

EOS INTERFACE GUIDE, GATEWAY SETUP AND POINTS LIST

Advanced Points List:

A_Auto-Diff	Read Only	Auto Diff 0=Manual-FIXED 1=AUTO-PID	
<i>MODBUS</i>	Input Register	14	30015
<i>BACNET</i>	A_Auto-Diff	30015	
<i>LONWORKS</i>	nvoA_AutoDif_#		
Note:			

A_DHW Call	Read Only	DHW Call present=0 No call=1	
<i>MODBUS</i>	Input Register	16	30017
<i>BACNET</i>	A_DHW Call	30017	
<i>LONWORKS</i>	nvoA_DHWCall_#		
Note:			

A_EMS Signal	Read Only	PIM EMS Signal 0 - 100 = 0-10VFD	
<i>MODBUS</i>	Input Register	17	30018
<i>BACNET</i>	A_EMS Signal	30018	
<i>LONWORKS</i>	nvoA_EMSSig_#		
Note:			

A_Boiler Cas ADR	Read Only	ADR 0=None 1=Master2-X=Member	
<i>MODBUS</i>	Input Register	100	30101
<i>BACNET</i>	A_Boiler Cas ADR	30101	
<i>LONWORKS</i>	nvoA_BICsAdr_#		
Note:			

A_Model Number	Read Only	Model Number	
<i>MODBUS</i>	Input Register	300	30301
<i>BACNET</i>	A_Model Number	30301	
<i>LONWORKS</i>	nvoA_ModNum_#		
Note:			

A_Firmware Revision	Read Only	SVN Revision	
<i>MODBUS</i>	Input Register	301	30302
<i>BACNET</i>	A_Firmware Revision	30302	
<i>LONWORKS</i>	nvoA_FWRev_#		
Note:			

A_Application Ver	Read Only	Application Version	
<i>MODBUS</i>	Input Register	302	30303
<i>BACNET</i>	A_Application Ver	30303	
<i>LONWORKS</i>	nvoA_AppVer_#		
Note:			