


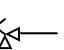
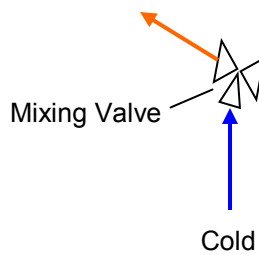


PIPING GUIDELINE: MULTIPLE WATER HEATERS WITH REVERSE RETURN PIPING
NOTE: For TURBOPOWER® 99 water heaters, refer to form PV 6766

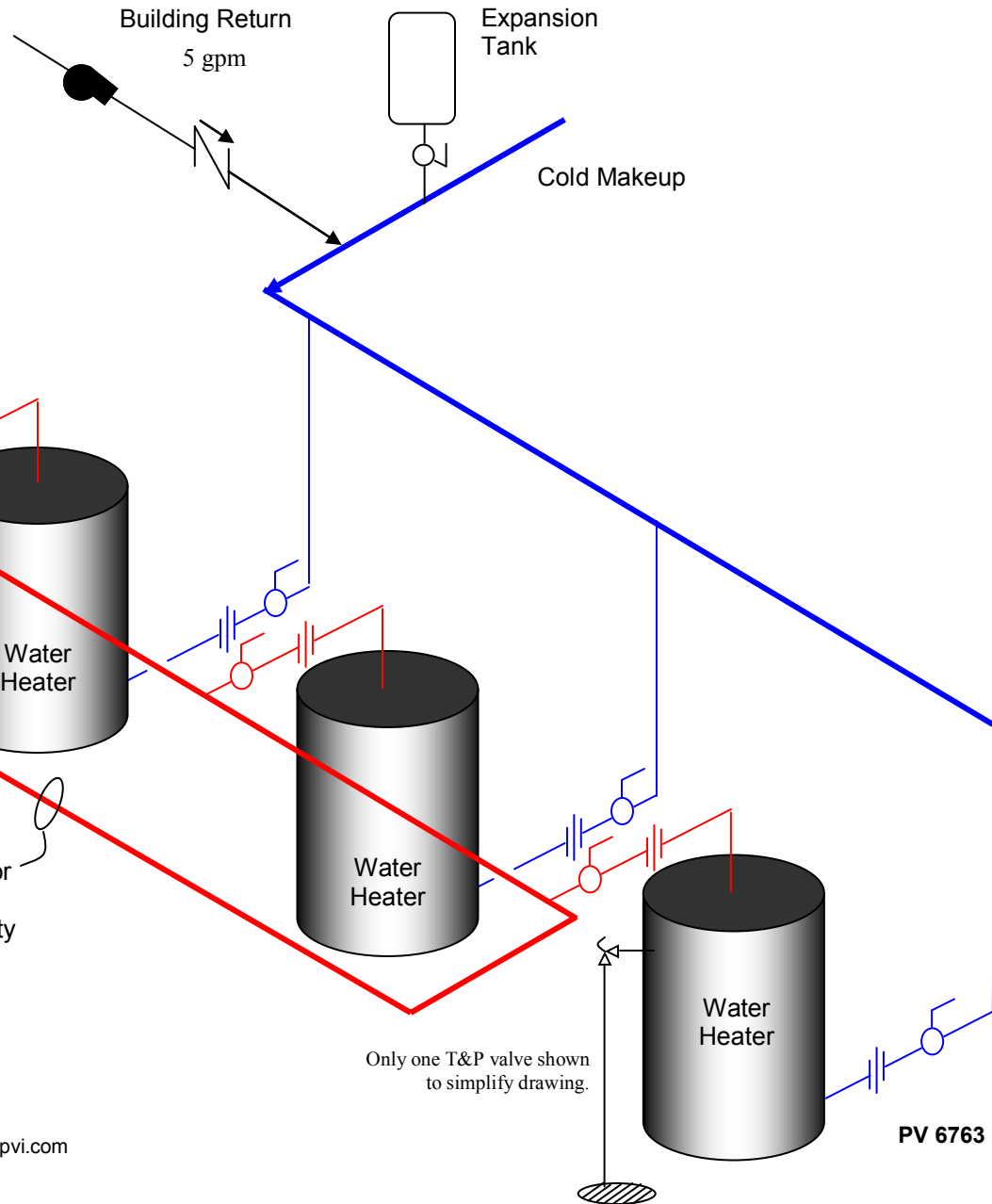
	Union
	Isolation Ball Valves
	Check Valve
	T&P Relief Valve (pipe in accordance with local codes, or direct to drain with no valves or restrictions)

Tank fitting location may vary from those shown.

Tempered Water to Building
(consult codes for required temperature)



Size all common piping for the total anticipated flow rate at a maximum velocity of ~ 6 feet /second.



PVI INDUSTRIES, LLC
 FORT WORTH, TEXAS 76111
 (800) 784-8326 • (817) 335-9531 • www.pvi.com