


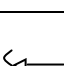
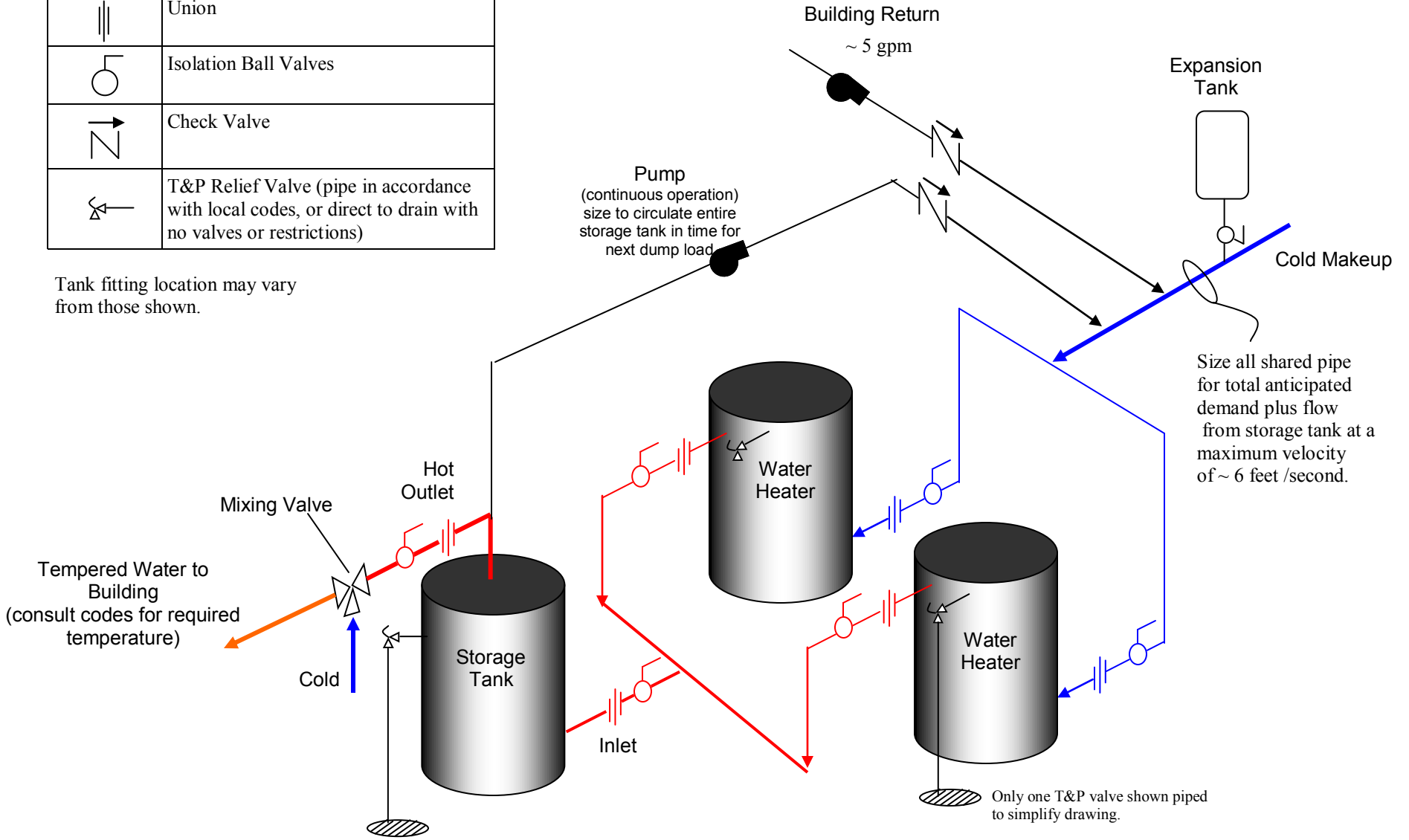


# PIPING GUIDELINE: TWO STORAGE WATER HEATERS WITH SINGLE SUPPLEMENTAL STORAGE TANK

NOTE: TURBOPOWER 99 water heaters have building return connection different than shown here. Refer to drawing PV 6771.

	Union
	Isolation Ball Valves
	Check Valve
	T&P Relief Valve (pipe in accordance with local codes, or direct to drain with no valves or restrictions)

Tank fitting location may vary from those shown.



PVI INDUSTRIES, LLC  
FORT WORTH, TEXAS 76111  
(800) 784-8326 • (817) 335-9531 • www.pvi.com