



ENGINEERED WATER HEATING SOLUTIONS

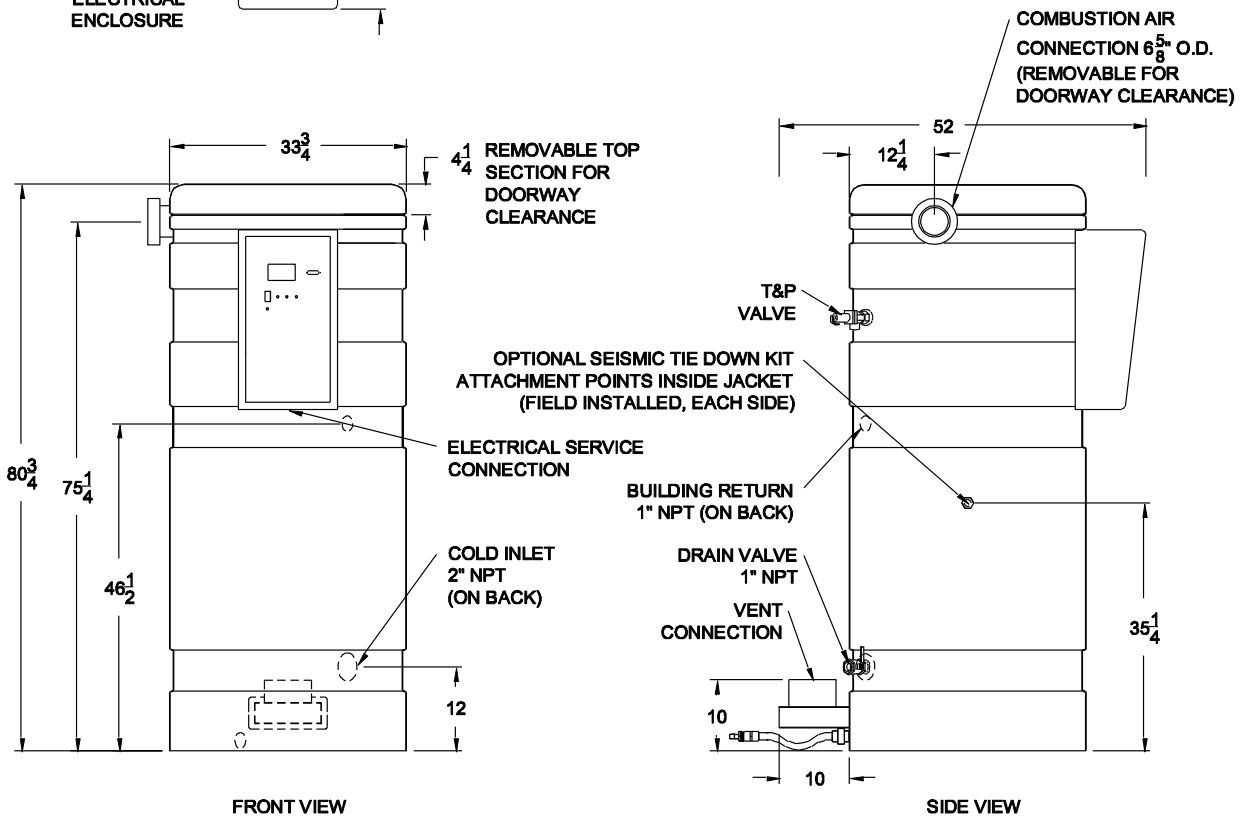
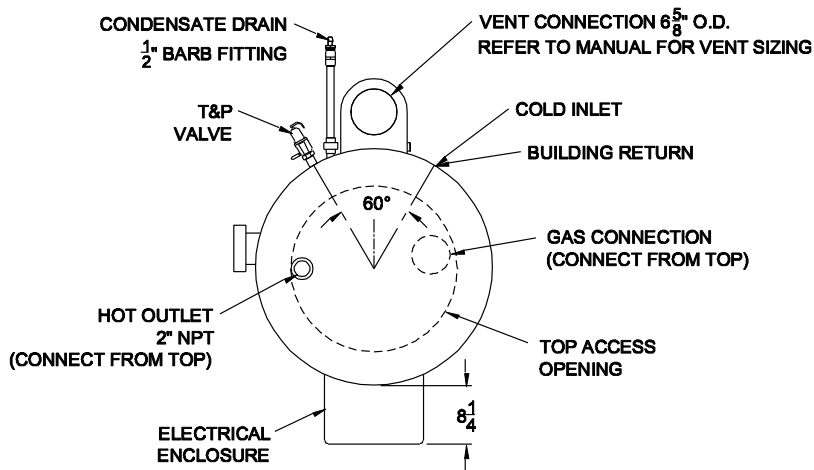
REPLACEMENT PARTS LIST
CONQUEST® CONDENSING GAS WATER HEATERS
with EOS (Electronic Operating System)
399 to 800 MBH

(Please Have Model and Serial Number When Ordering Parts)



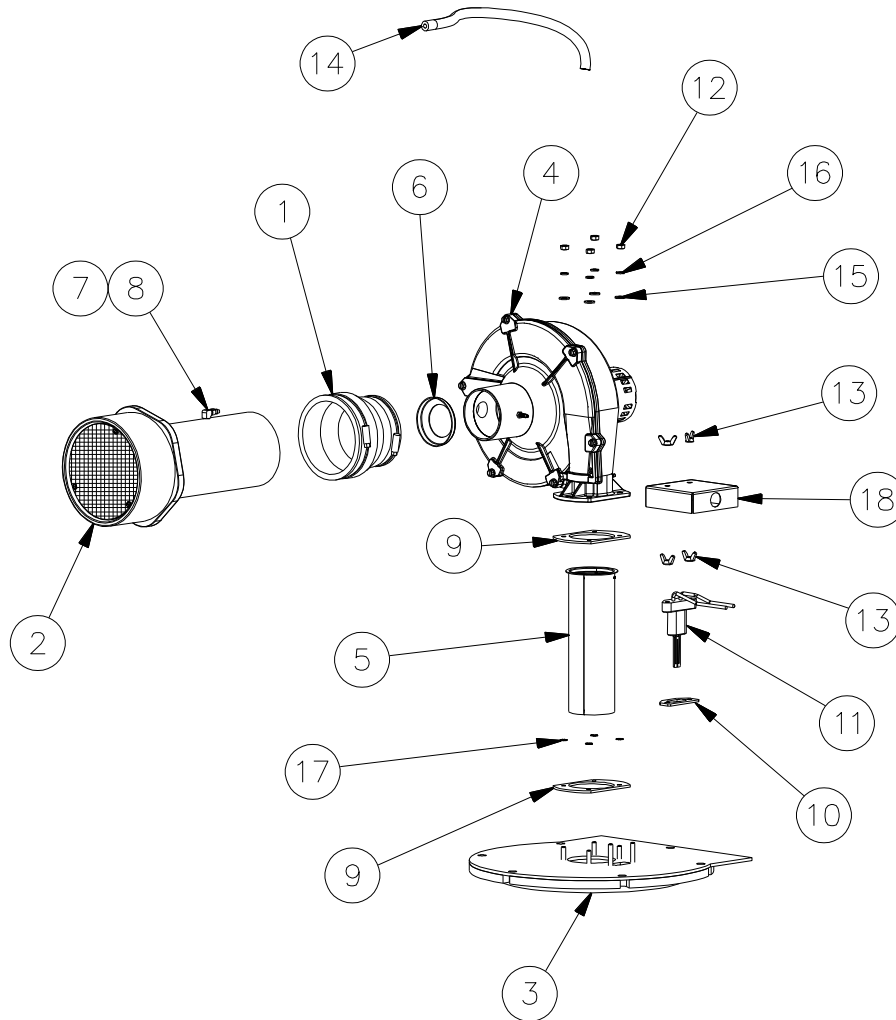
Contents	Page
Typical Conquest 130 Gallon Construction	2
Blower and Burner Assembly	3
Control Panel Components	4
Drain Valve – T & P Relief Valve – Integral Circulating Pump Assembly	5
Condensate Drain Trap & Optional Condensate Neutralizer	5
Gas Train Assembly	6

TYPICAL CONQUEST 130 GALLON CONSTRUCTION



- MODEL 40 L 130A-GCL
- MODEL 50 L 130A-GCML
- MODEL 60 L 130A-GCML
- MODEL 70 L 130A-GCML
- MODEL 80 L 130A-GCML

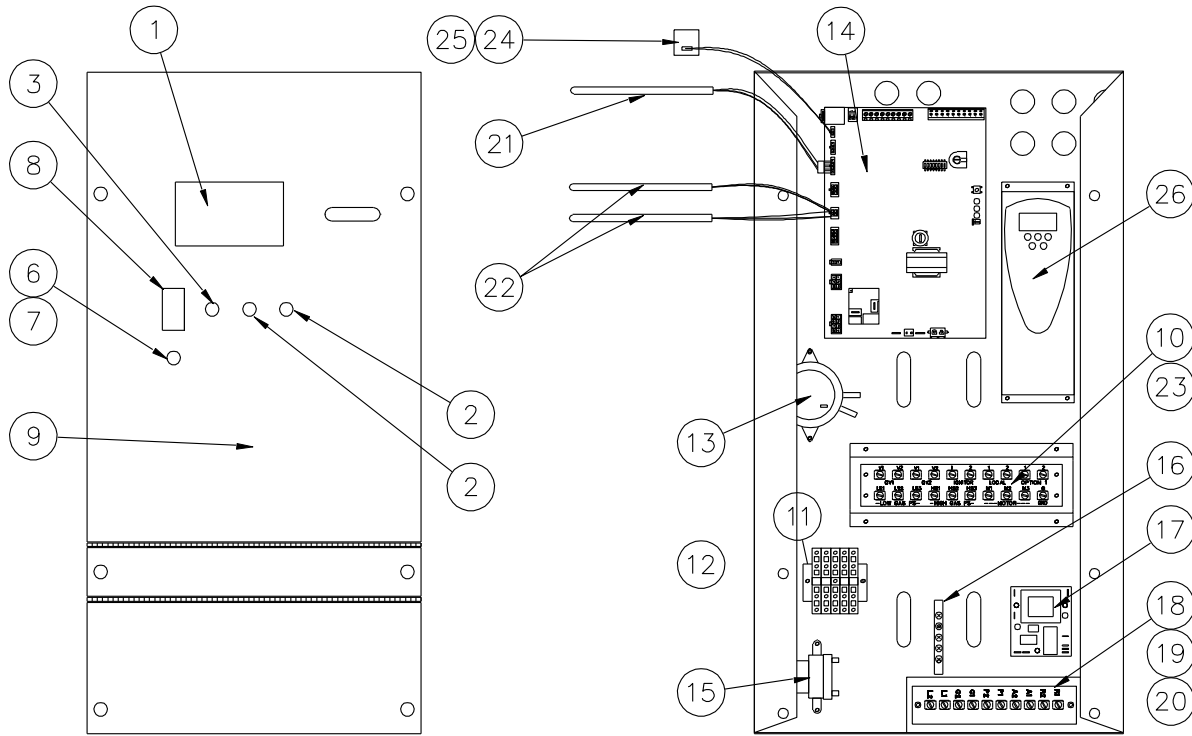
BLOWER & BURNER ASSEMBLY



Models (40, 50, 60, 70, 80) L 130A-GC(M)L

ITEM	DESCRIPTION	40 L	50 L	60 L	70 L	80 L
1	ADAPTER,FLEXIBLE RUBBER 4 X	119469	119469	119469	119469	119469
2	ASSY,AIR INTAKE AGC/ACB WITH SCREEN	121852	121852	121852	121852	121852
3	ASSY,BULKHEAD AGC/ACB W/INSULATION REV13	128538	128538	128538	128538	128538
4	BLOWER, FASCO #70430102 1/2 HP	*	119466	119466	119466	119466
4	BLOWER,FASCO #7062-6047 1/2 HP 120V	119467	*	*	*	*
5	BURNER,WORGAS #PRX0113 70 X 395 MM	115276	115276	115276	115276	115276
6	CAP,ORIFICE 3 X 2 ID AGC/ACB	*	128985	128985	128985	128985
6	CAP,ORIFICE 3 X 1 3/4 ID AGC	128984	*	*	*	*
7	CLAMP,HOSE 1/4 NYLON	120333	120333	120333	120333	120333
8	ELL,BRASS 1/8 NPT X 1/4 HOSE BARB	118016	118016	118016	118016	118016
9	GASKET,FLANGE BLOWER/BURNER 1/8	120493	120493	120493	120493	120493
10	GASKET,IGNITOR 1/8 232 CRANEGLAS Y271	111791	111791	111791	111791	111791
11	IGNITER, HOT SURFACE NORTON #271Y	107775	107775	107775	107775	107775
12	NUT,HEX 1/4 X 20 NC STEEL ZINC PLT	3475	3475	3475	3475	3475
13	NUT,WING 1/4 X 20 NC STEEL ZINC PLT	79972	79972	79972	79972	79972
14	KIT,SILICONE TUBING AGC 3/16 ID X 5/16 OD X 2 FT	128323	128323	128323	128323	128323
15	WASHER,FLAT 1/4 PLT	15607	15607	15607	15607	15607
16	WASHER,LOCK 1/4 PLT	3494	3494	3494	3494	3494
17	WASHER,STAR 1/4 SHAKEPROOF	38607	38607	38607	38607	38607
18	ENCL,IGNITER CONDUIT CONN MXF	113960	113960	113960	113960	113960

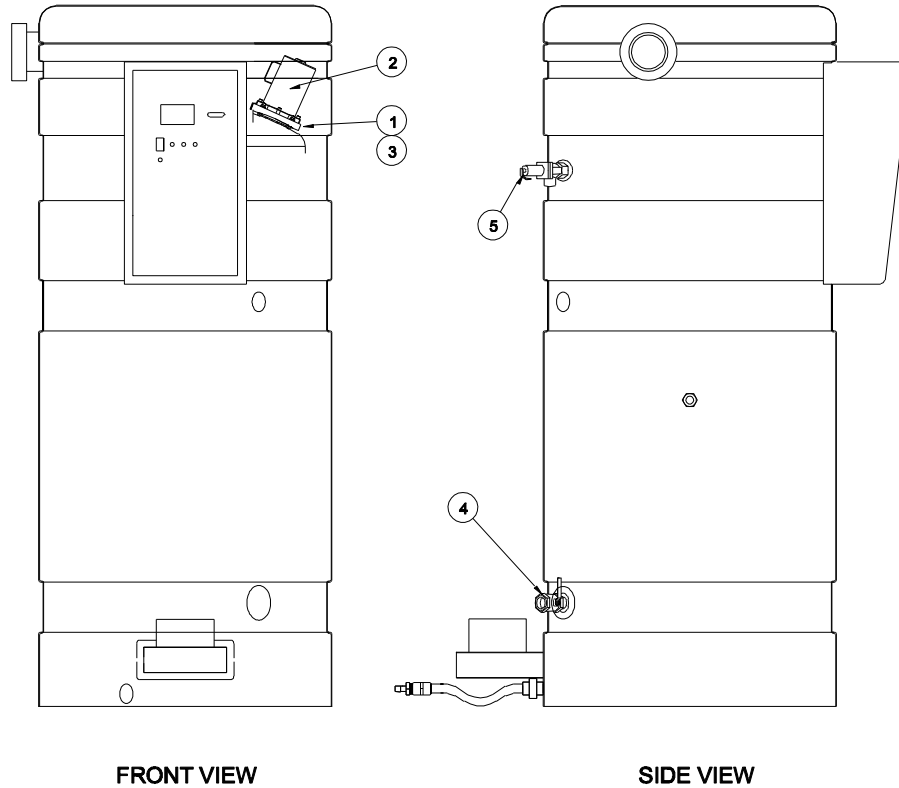
CONTROL PANEL COMPONENTS



Models (40, 50, 60, 70, 80) L 130A-GC(M)L

ITEM	DESCRIPTION	40 L	50 L	60 L	70 L	80 L
1	KIT,EOS BTCII USER INTERFACE REPLACEMENT	138397	138398	138399	138400	138401
2	SWITCH, SPST N.C. MOMENTARY CONTACT SELECTA #SS229	70573	70573	70573	70573	70573
3	SWITCH, SPST N.O. MOMENTARY CONTACT SELECTA #SS228	75908	75908	75908	75908	75908
4	FACE PLATE DECAL	126335	126335	126335	126335	126335
5	SCREW 10-24 X 1/2	125249	125249	125249	125249	125249
6	FUSEHOLDER, PANEL TYPE #HTB-28I	5613	5613	5613	5613	5613
7	FUSE, MDA 10 AMP BUSS 250V	76267	76267	76267	76267	76267
8	SWITCH, CARLING #LTLA51-6S-BL-AM-NBL-125N/INDP AMBER LIGHT	70565	70565	70565	70565	70565
9	PLATE, FACE AGC PIM/Digital Control Display	126076	126076	126076	126076	126076
10	BOARD, TERMINAL ELEC-TRON #PV13080 20 POLE FEED	122346	122346	122346	122346	122346
11	BLOCK, TERMINAL WAGO #280-833 600V 20A DIN	122319	122319	122319	122319	122319
12	JUMPER, TERMINAL BLOCK WAGO #280-402 23A	122320	122320	122320	122320	122320
13	SWITCH, AIR PROVING CLEVELAND CONTROLS #NS2-1166-01 0.50 WC	121444	121444	121444	121444	121444
14	KIT,PIM CONTROL REPLACEMENT	129335	129336	129337	129338	129339
15	TRANSFORMER, STEP DOWN TRIAD #F5-24 115VAC 24VCT 12.0VA	126865	126865	126865	126865	126865
16	BAR, GROUND SQUARE D #PKSGTA 5 POLE	122321	122321	122321	122321	122321
17	LWCO, PROTODESIGN #LW-3-C-1-A-03 120V	113915	113915	113915	113915	113915
18	BOARD, TERMINAL ELEC-TRON #PV13140 10 POLE FEED THRU TYPE	140328	140328	140328	140328	140328
19	BRACKET, TERMINAL STRIP MTG 3 X 6 FOR P/N 102011	121749	121749	121749	121749	121749
20	JUMPER, ELEC-TRON #ESJ-145	102467	102467	102467	102467	102467
21	HIGH LIMIT/UPPER OPERATOR THERMISTOR SENSOR #91769 DUAL	126090	126090	126090	126090	126090
22	LOWER OPERATOR/FLUE TEMP THERMISTOR SENSOR #91768 SINGLE	126089	126089	126089	126089	126089
23	JUMPER, ELEC-TRON #ESJ-154	122746	122746	122746	122746	122746
24	PROFILE ID CARD FENWAL #05-900000 WATER HEATER	126536	126536	126536	126536	126536
25	CARD CABLE FENWAL #05-900001-018	126537	126537	126537	126537	126537
26	KIT,VFD PRG EMERSON M100	N/A	125234	125233	125231	125230

DRAIN VALVE – T & P RELIEF VALVE – INTEGRAL CIRCULATING PUMP ASSEMBLY

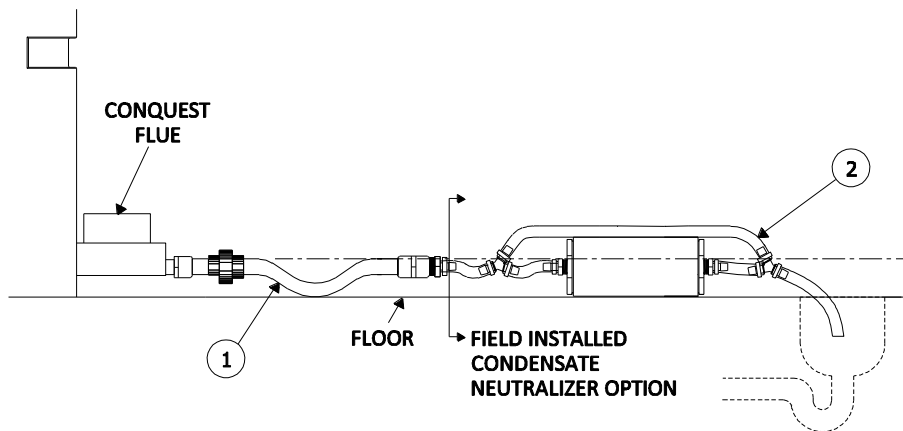


FRONT VIEW

SIDE VIEW

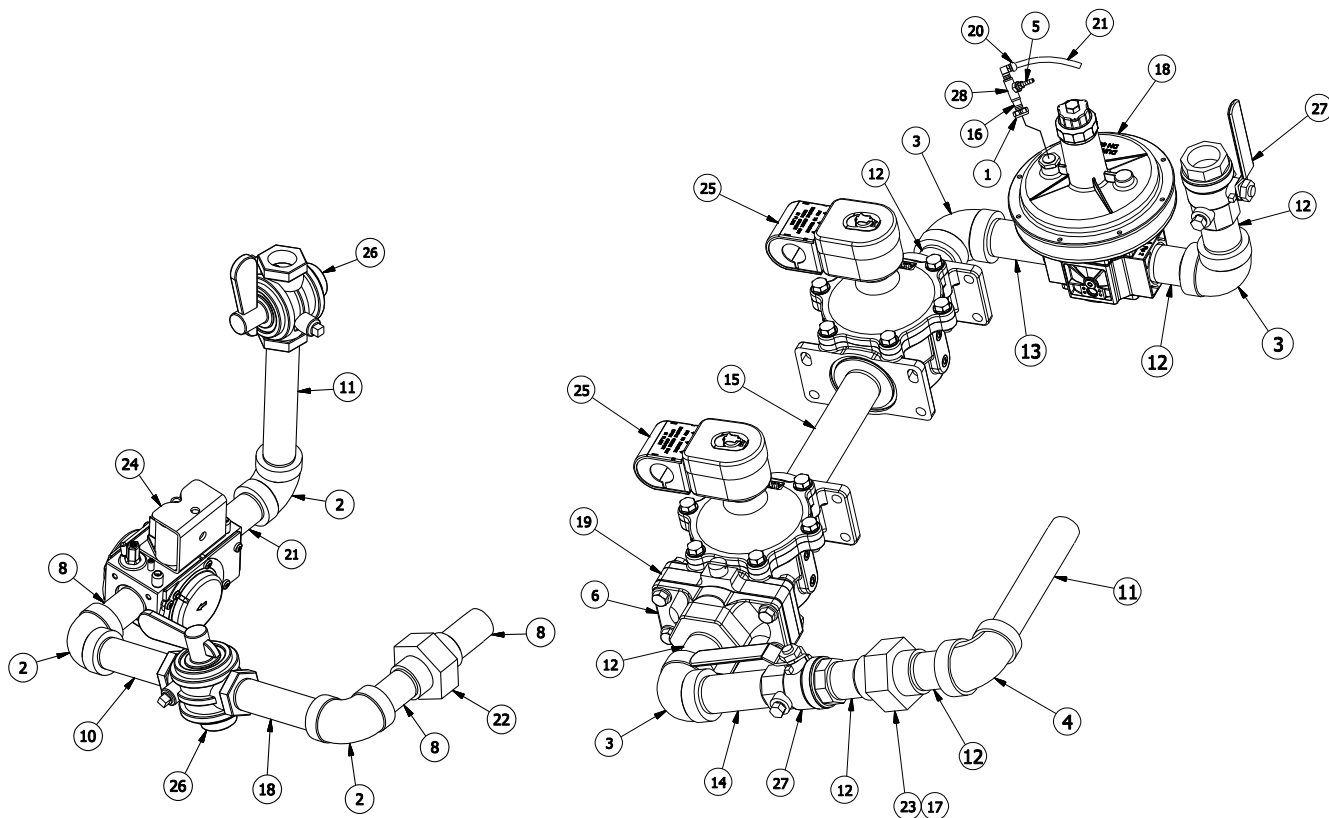
ITEM	DESCRIPTION	40 L 130A-GCL	50-80 L 130A-GCML
1	FLANGE, MTG BRONZE INTEGRAL PUMP PL	122289	122289
2	MOTOR, PUMP B & G #1BL113 MODEL #PL-75 115 VAC W/IMPELLER	120090	120090
3	O-RING, GASKET 4.25 OD X 3.50 ID X .375	122423	122423
4	VALVE,BALL 1 WATTS #LFFBV-3C BRASS THREADED 400 WOG	122394	122394
5	VALVE, T & P RELIEF 1 WATTS	5432	709

CONDENSATE DRAIN TRAP & OPTIONAL CONDENSATE NEUTRALIZER



ITEM	DESCRIPTION	40 L 130A-GCL	50-80 L 130A-GCML
1	ASSY,COND DRAIN AGC 130 GAL 3/4 PVC	129230	140838
2	ASSY, CONDENSATE DRAIN NEUTRALIZATION 1/2	140793	140794

GAS TRAIN ASSEMBLY



Model 40 L 130A-GCL

Models (50, 60, 70, 80) L 130A-GCML

ITEM	DESCRIPTION	40 L	50 L	60 L	70 L	80 L
1	BUSHING,BRASS 1/4 X 1/8	*	6547	6547	6547	6547
2	ELL,BLACK 90DEG 3/4	6160	*	*	*	*
3	ELL,BLACK 90DEG 1	*	6163	6163	6163	6163
4	ELL,BLACK 90DEG 1 X 3/4	*	6164	6164	6164	6164
5	FITTING,BRASS 1/8 NPT X 1/4 HOSE BARB	*	122828	122828	122828	122828
6	FLANGE,ADAPTER 1 ASCO #296659-002 INLET/OUTLET	*	115770	115770	115770	115770
8	NIPPLE,BLACK 3/4 X 2	5991	*	*	*	*
9	NIPPLE,BLACK 3/4 X 2 1/2	114154	*	*	*	*
10	NIPPLE,BLACK 3/4 X 3 1/2	114262	*	*	*	*
11	NIPPLE,BLACK 3/4 X 6	5995	5995	5995	5995	5995
12	NIPPLE,BLACK 1 X 2	*	6011	6011	6011	6011
13	NIPPLE,BLACK 1 X 3	*	6012	6012	6012	6012
14	NIPPLE,BLACK 1 X 3 1/2	*	6013	6013	6013	6013
15	NIPPLE,BLACK 1 X 7	*	6018	6018	6018	6018
16	NIPPLE,BRASS 1/8 X CL	*	6508	6508	6508	6508
17	ORIFICE,DISC 1.750 OD X 0.500 ID (Natural Gas)	*	121791	121791	121791	121791
	ORIFICE,DISC 1.750 OD X 0.625 ID (Propane Gas)	*	123063	123063	123063	123063
18	REGULATOR,1 DUNGS #FRG710/6 ZERO GOVERNOR PROPORTIONATOR	*	79524	79524	79524	79524
19	SHUTTER,VALVE ASCO #HV426038001 1 TO 1 1/2 INCH	*	115786	115786	115786	115786
20	SNUBBER,90DEG 1/4 TUBE X 1/8 MPT #80 ORIFICE ANTUNES #00200-0302	*	5196	5196	5196	5196
21	TUBING,ALUMINUM 1/4 .032 WALL X 50 FT COIL DEAD SOFT	*	3299	3299	3299	3299
22	UNION,BLACK 3/4	5928	*	*	*	*
23	UNION,BLACK 1	*	5929	5929	5929	5929
24	VALVE, GAS 3/4 EBM #55290.04007 TYPE GB-ND 057 D01 S20 XP	125504	*	*	*	*
25	VALVE,GAS 1 ASCO #JB8214250 110/120V 50/60AC	*	118269	118269	118269	118269
26	VALVE,SHUTOFF 3/4 KEY GAS #216-242111	5336	*	*	*	*
27	VALVE, SHUTOFF 1 GAS COMBU #55350 MODEL #840S	*	52823	52823	52823	52823
28	TEE,BRASS 1/8	*	6437	6437	6437	6437