

Installation Instructions – Supplemental

REMOVE AND REPLACE POWER VT COMBUSTION CHAMBER

This document covers the recommended sequence of actions to assist in the proper installation of the vertical tube chamber.

IMPORTANT: Call PVI Technical Service at 1-800-433-5654 for additional instruction. Installation and service must be performed by a qualified installer or service agency.

WARNING: If the information on the appliance, the supplied manual(s) and these instructions are not followed exactly, a fire, explosion or exposure to hazardous materials may result causing property damage, personal injury or loss of life.

FIELD CHAMBER REMOVAL

1. Service must only be performed by a factory-authorized service personnel.
2. Visually check all components orientation and that they are intact and no damage has occurred during transit. Review the list of materials required to re-install chamber and ensure that all materials are on hand. Refer to PN 112125.
3. Identify jacket trim ring between chamber jacket and tank jacket. This is located approximately 21" down from top end. Refer to Figure 1 to identify Power VT main components.

4. Unscrew the top panels connected to the chamber jacket ring (trim ring PN 70067).
5. Remove straps connecting chamber to tank.
6. Cut the silver tape that connects chamber and tank. Refer to Figure 2.

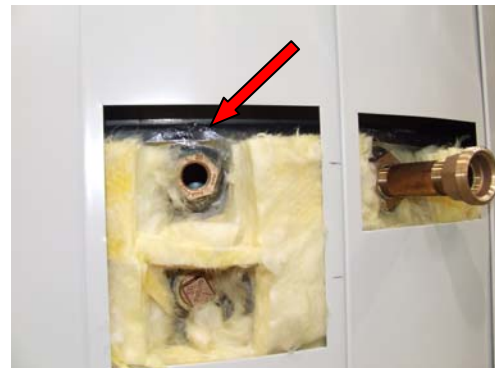


Figure 2

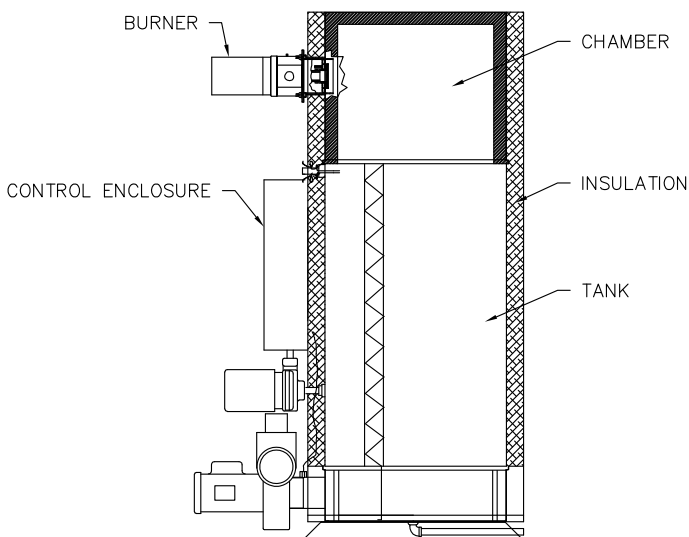


Figure 1

7. Disconnect all conduit between components on the chamber jacket and main control enclosure. Refer to Figure 3.

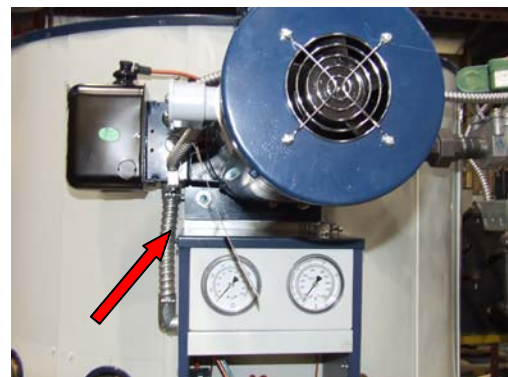


Figure 3

8. Lift chamber.

FIELD CHAMBER RE-INSTALLATION

9. Check that all baffles are in place.
10. Ensure the insulation and the tube inserts are properly in place on the top head and that the combustion chamber insulation is intact and undamaged.
11. Set chamber in place with original orientation. Proper alignment is critical for sealing.
12. Ensure alignment of thermostat openings with the flue outlet nozzle on the base.
13. Install new ceramic fiber tape (PN 3387) to form the seal between the tank and chamber. Tape should be applied to the top face if the tank and extend to the edge of the joggle.
14. Ensure that the connection between the tank and chamber is properly sealed. Make sure that it settles, then strap in place. Use new straps (PN 4994). Refer to Figure 4.



Figure 4

CRITICAL: Ensure chamber is properly sealed against flue gas leaks.

15. Screw chamber jacket panels back to the ring. Use new screws (PN 70505).
16. Reinstall the burner and gas train, the reconnect all wiring.
17. Engage a factory-authorized service representative to test, inspect and adjust the water heater and components and to perform Start-up services. Perform installation and Start-up checks according to manufacturer's written instructions.
18. Refer to the heater I&M manual for Start-up procedure.

CAUTION: Following the heater assembly and startup, the unit must be inspected for uniform temperature at the vicinity of the tank and chamber joint. If unusually hot areas are found, shut the unit off immediately. Check the combustion chamber-to-tank joint and seal with refractory compounds as required (PN 78005).