

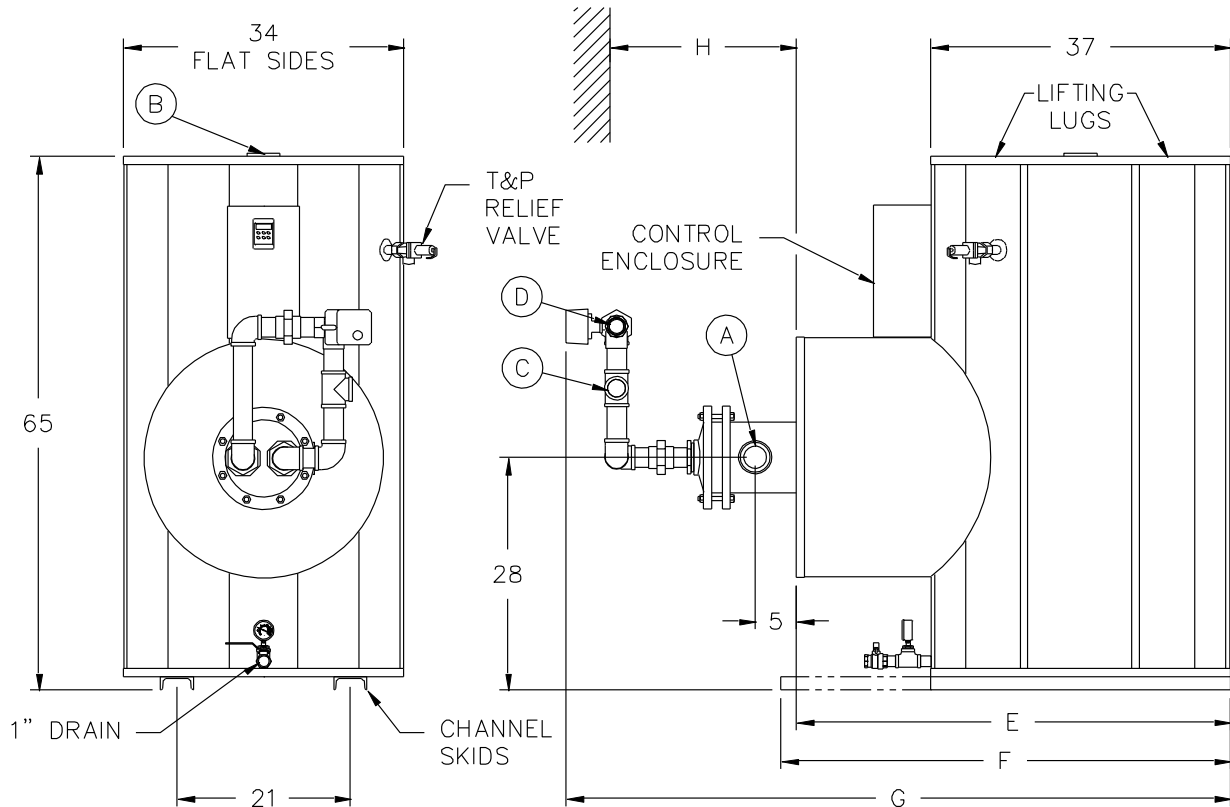
# QuickDraw® BOILER WATER DOUBLE-WALL PACKAGED WATER HEATER with AquaPLEX® STORAGE TANK

**TANK SERIES 150 GALLON**

MODEL NUMBER	STANDARD RECOVERY RATE	STANDARD BOILER WATER FLOW	A COLD INLET NPT	B HOT OUTLET NPT	C BOILER WATER INLET NPT	D BOILER WATER OUTLET NPT	E COWLING DEPTH	F SKID LENGTH	G OVERALL DEPTH	H PULL SPACE	SHIPPING WEIGHT LBS
	40°F - 140°F	180°F (20°ΔT)									
250 L 150A-QWD	130	11	2	2	3/4	3/4	42	37-1/2	69	34	1070
700 L 150A-QWD	340	29	2	2	1-1/4	1-1/4	53	54-1/2	80	40	1120
900 L 150A-QWD	440	38	2	2	1-1/4	1-1/4	53	54-1/2	80	40	1160
1300 L 150A-QWD	620	53	2	2	1-1/2	1-1/2	53	54-1/2	81	40	1240
1900 L 150A-QWD	950	80	2-1/2	2	2	2	53	54-1/2	81	40	1380
2200 L 150A-QWD	1090	92	2-1/2	2	2	2	53	54-1/2	81	40	1420
2800 L 150A-QWD	1430	122	2-1/2	2	2-1/2	2-1/2	53	54-1/2	88	40	1460
3400 L 150A-QWD	1620	138	2-1/2	2	2-1/2	2-1/2	53	54-1/2	88	40	1660
4400 L 150A-QWD	2270	193	2-1/2	2	3	3	53	54-1/2	88	46	1800
6100 L 150A-QWD	2930	249	2-1/2	2	4	4	53	54-1/2	88	46	2010
	gph	gpm									

\* For recoveries, boiler water flows and valve sizes at different boiler water temperatures and temperature rises, refer to forms PV 6910.

**Electrical requirements:** 120V, 1Ø, 60 Hz., 15 amps maximum, to a single point connection.  
When using 4" boiler water valve, the supply and return piping is to be field supplied and installed.  
Dimensions are in inches unless otherwise noted.  
For standard and optional equipment, see form PV 8163.



PVI RESERVES THE RIGHT TO CHANGE THE DESIGN AND SPECIFICATION WITHOUT NOTICE.