

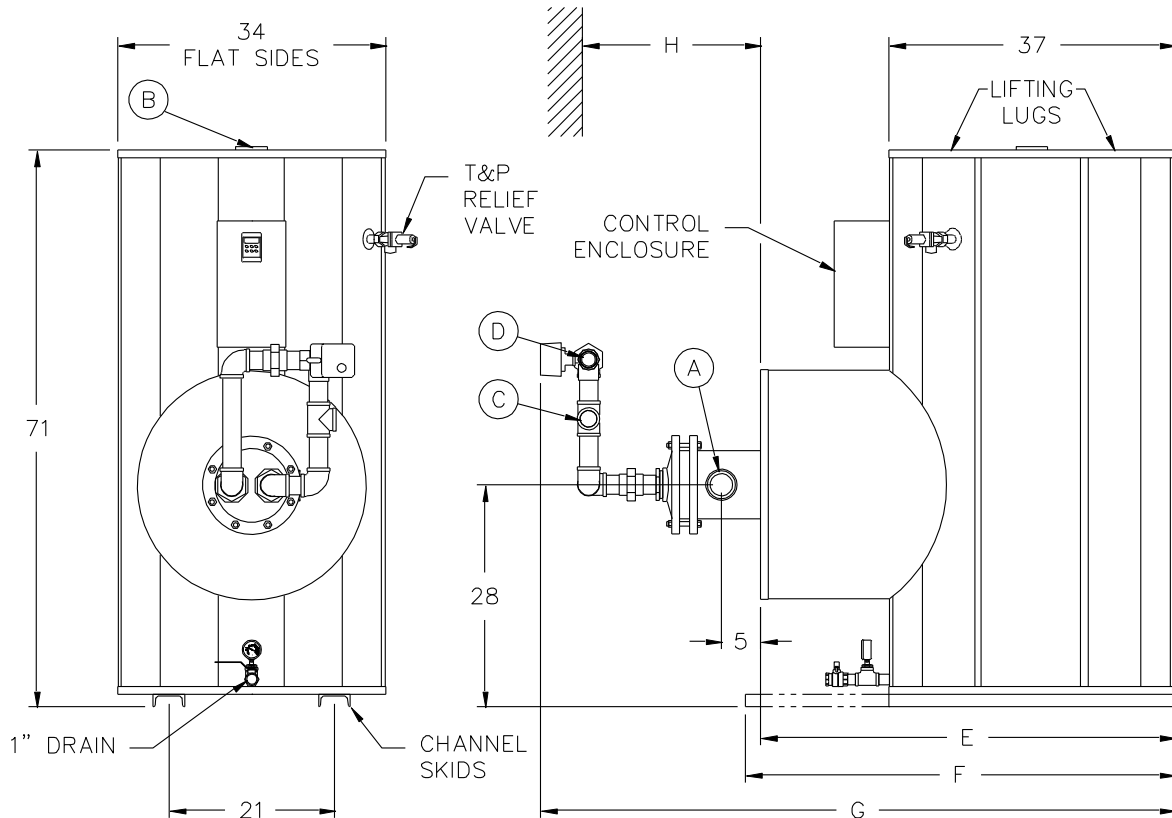
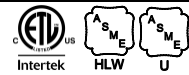
# QuickDraw® BOILER WATER SINGLE-WALL PACKAGED WATER HEATER with AquaPLEX® STORAGE TANK

TANK SERIES 175 GALLON

MODEL NUMBER	STANDARD RECOVERY RATE	STANDARD BOILER WATER FLOW	A COLD INLET NPT	B HOT OUTLET NPT	C BOILER WATER INLET NPT	D BOILER WATER OUTLET NPT	E COWLING DEPTH	F SKID LENGTH	G OVERALL DEPTH	H PULL SPACE	SHIPPING WEIGHT LBS
	40°F - 140°F	180°F (20°ΔT)									
300 L 175A-QW	140	12	2	2	3/4	3/4	42	37-1/2	69	34	1120
550 L 175A-QW	240	21	2	2	1	1	42	37-1/2	69	34	1160
800 L 175A-QW	380	32	2	2	1-1/4	1-1/4	53	54-1/2	80	46	1170
1500 L 175A-QW	690	58	2	2	1-1/2	1-1/2	53	54-1/2	81	46	1260
2300 L 175A-QW	1020	87	2-1/2	2	2	2	53	54-1/2	81	40	1360
2600 L 175A-QW	1200	102	2-1/2	2	2-1/2	2-1/2	53	54-1/2	88	46	1370
3300 L 175A-QW	1490	126	2-1/2	2	2-1/2	2-1/2	53	54-1/2	88	40	1530
4000 L 175A-QW	1790	152	2-1/2	2	3	3	53	54-1/2	88	46	1550
4400 L 175A-QW	2540	215	2-1/2	2	4	4	53	54-1/2	88	46	1660
7100 L 175A-QW	3260	276	2-1/2	2	4	4	53	54-1/2	88	46	1820
	gph	gpm									

\* For recoveries, boiler water flows and valve sizes at different boiler water temperatures and temperature rises, refer to forms PV 6909.

**Electrical requirements:** 120V, 1Ø, 60 Hz., 15 amps maximum, to a single point connection.  
When using 4" boiler water valve, the supply and return piping is to be field supplied and installed.  
Dimensions are in inches unless otherwise noted.  
For standard and optional equipment, see form PV 8163.



PVI RESERVES THE RIGHT TO CHANGE THE DESIGN AND SPECIFICATION WITHOUT NOTICE.



PVI Industries, LLC  
Fort Worth, TX • (800) 784-8326 • www.pvi.com