

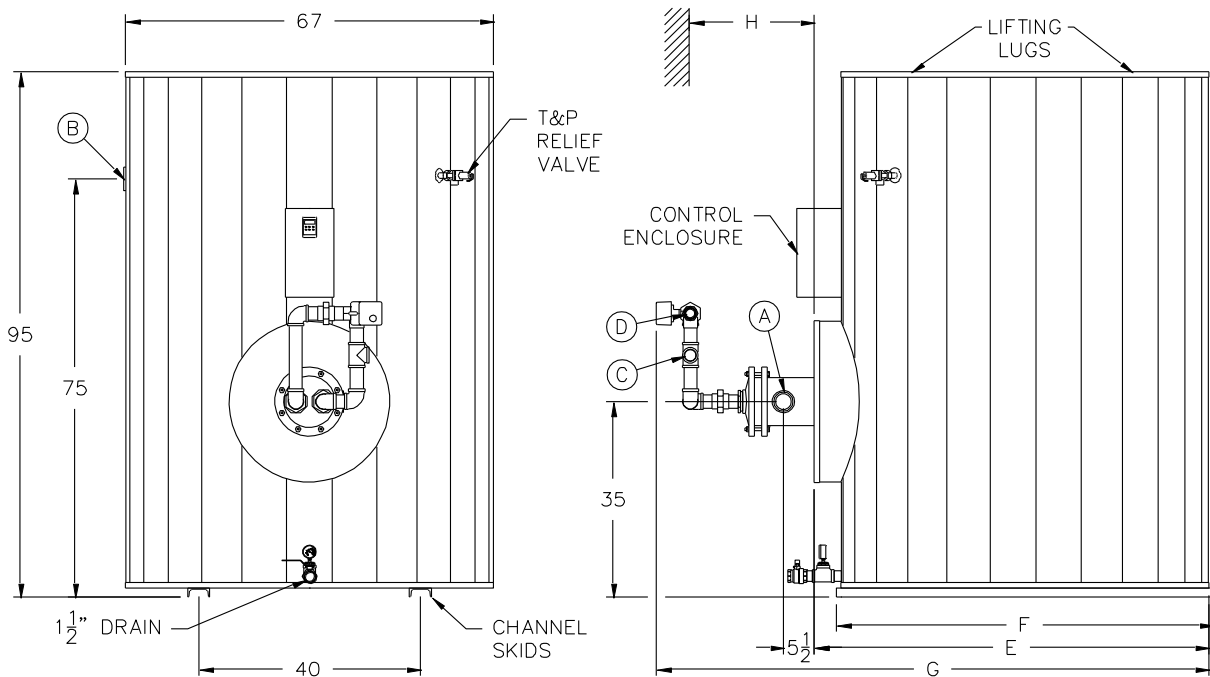
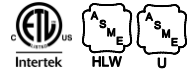
QuickDraw® BOILER WATER SINGLE-WALL PACKAGED WATER HEATER with AquaPLEX® STORAGE TANK

TANK SERIES 900 GALLON

MODEL NUMBER	STANDARD RECOVERY RATE	STANDARD BOILER WATER FLOW	A COLD INLET NPT	B HOT OUTLET NPT	C BOILER WATER INLET NPT	D BOILER WATER OUTLET NPT	E COWLING DEPTH	F SKID LENGTH	G OVERALL DEPTH	H PULL SPACE	SHIPPING WEIGHT LBS
	40°F - 140°F	180°F (20°ΔT)									
300 L 900A-QW	140	12	2	3	3/4	3/4	71	68	98	34	2260
600 L 900A-QW	270	23	2	3	1	1	71	68	98	58	2270
800 L 900A-QW	380	32	2	3	1-1/4	1-1/4	71	68	98	46	2310
1100 L 900A-QW	510	43	2	3	1-1/4	1-1/4	71	68	98	58	2320
1500 L 900A-QW	690	58	2	3	1-1/2	1-1/2	71	68	99	46	2400
2000 L 900A-QW	950	80	2	3	2	2	71	68	99	58	2420
2300 L 900A-QW	1020	87	2-1/2	3	2	2	71	68	99	40	2500
2600 L 900A-QW	1200	102	2-1/2	3	2-1/2	2-1/2	71	68	106	46	2510
3000 L 900A-QW	1420	120	2-1/2	3	2-1/2	2-1/2	71	68	106	52	2600
3500 L 900A-QW	1630	138	2-1/2	3	2-1/2	2-1/2	71	68	106	58	2610
4000 L 900A-QW	1790	152	2-1/2	3	3	3	71	68	106	46	2690
4300 L 900A-QW	2110	179	2-1/2	3	3	3	71	68	106	52	2720
4500 L 900A-QW	2390	203	2-1/2	3	3	3	71	68	106	58	2740
6300 L 900A-QW	2960	251	2-1/2	3	4	4	71	68	106	52	2830
8200 L 900A-QW	3800	322	2-1/2	3	4	4	71	68	106	52	3000
	gph	gpm									

* For recoveries, boiler water flows and valve sizes at different boiler water temperatures and temperature rises, refer to forms PV 6909.

Electrical requirements: 120V, 1Ø, 60 Hz., 15 amps maximum, to a single point connection.
When using 4" boiler water valve, the supply and return piping is to be field supplied and installed.
Dimensions are in inches unless otherwise noted.
For standard and optional equipment, see form PV 8163.



PVI RESERVES THE RIGHT TO CHANGE THE DESIGN AND SPECIFICATION WITHOUT NOTICE.



PVI Industries, LLC
Fort Worth, TX • (800) 784-8326 • www.pvi.com