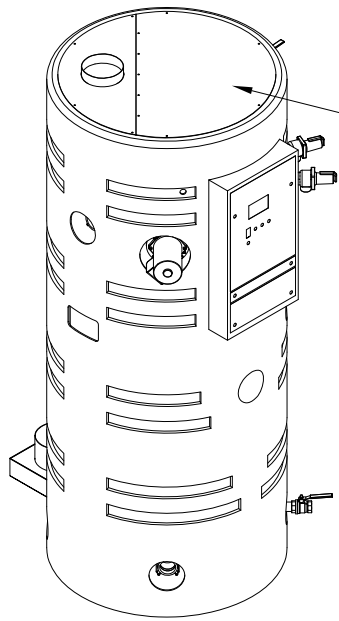
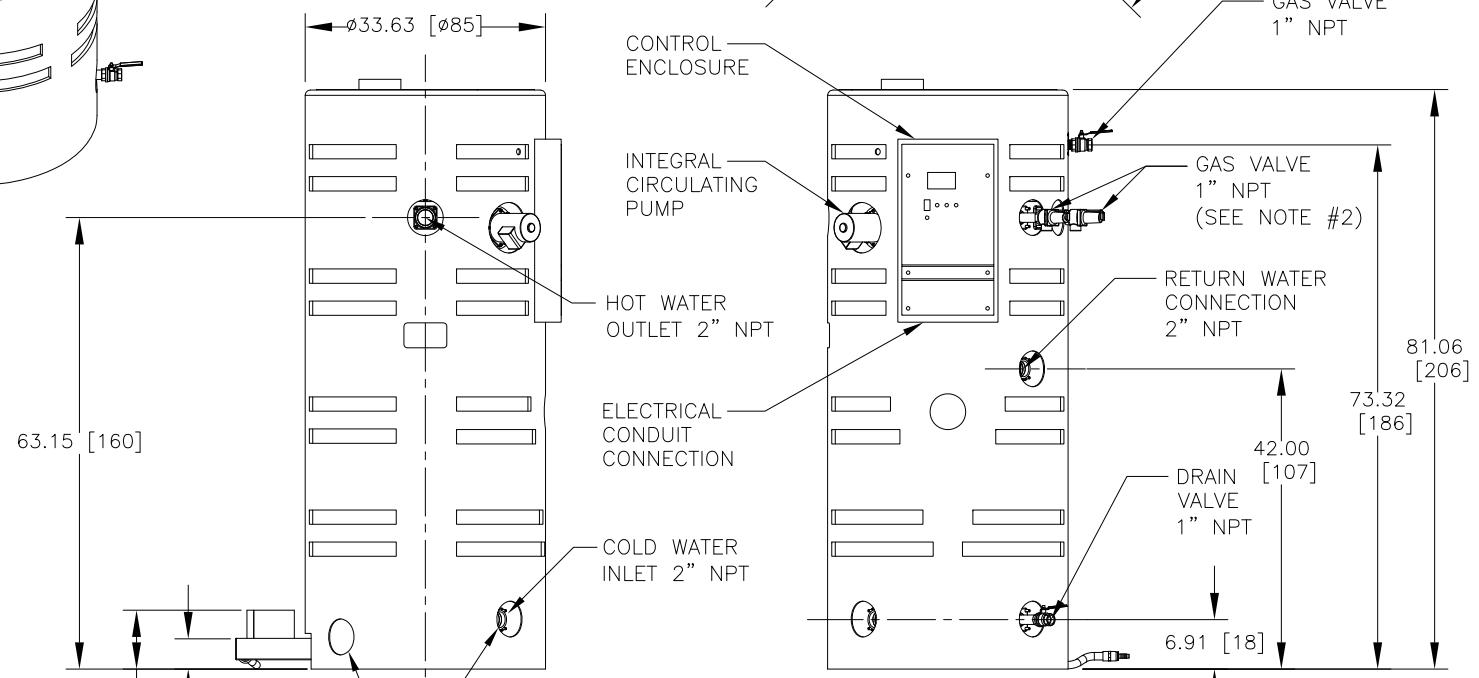
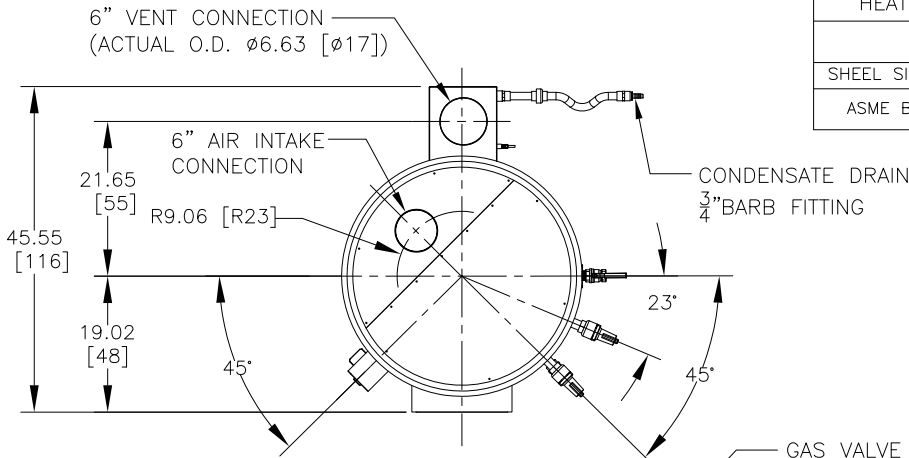


HEAT EXCHANGER DESIGN STANDARDS			
	MAX. WORKING PRESS. (PSIG)	MAXIMUM TEMP. (°F)	TEST PRESS. (PSIG)
SHEEL SIDE	150	210	225
ASME B & PV CODE: SECTION IV STAMP HLW			

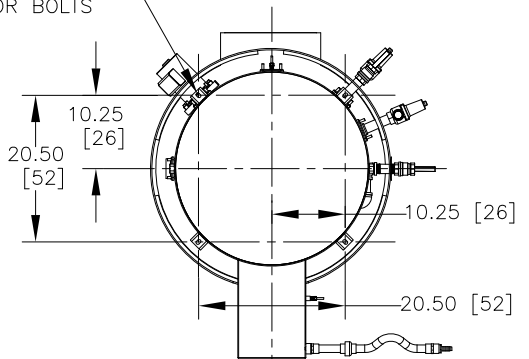


TOP ACCESS OPENING



4X SLOTS $\phi 0.50$ [$\phi 1$] FOR ANCHOR BOLTS

4X ANCHOR BOLT ACCESS OPENINGS



- NOTES:
- 1) ALL DIMENSIONS SHOWN ARE IN INCHES (CENTIMETERS).
 - 2) STANDARD PRODUCT COMES WITH ONE T&P VALVE FOR THE CSA RELIEF VALVE OPTION, A SECOND RELIEF VALVE WILL BE PROVIDED AS SHOWN.
 - 3) PVI RESERVES THE RIGHT TO MODIFY WATER HEATER DIMENSIONS WITHOUT PRIOR NOTICE.

	PVI INDUSTRIES FORT WORTH, TEXAS	
	CONQUEST 1100/1200 MBH GAS FIRED WATER HEATER DIMENSIONAL DRAWING	
DWN. BY <u>K.S.</u> DATE <u>071823</u> SCALE <u>NTS</u> REV. BY _____ DATE _____	<u>AP-P-1094</u>	REV. <u>A</u>