

## Sell Sheet

# PVI Stratified Storage Tanks

PVI's Storage Tanks are a perfect match for heat pump, solar, or traditional water heating systems, with designs for both stratified and mixed systems. The AquaPLEX duplex stainless steel tanks are resistant to chloride stress corrosion cracking and carry a 25-year warranty, even when storing up to 200°F.

Comparison of AquaPLEX with Glass Tank Linings (porcelain enamel) and Thermosetting Epoxy Polymers					
	Porosity	Anodes Required	Degrades at High Temperature	Complete Waterside Coverage and Protection	Standard Warranty
AquaPLEX	None	No	No	Yes	25 years
Glass Linings	Inherent	Yes	Yes, erodes	No. Exposure at the tank fittings and weld seams	3 or 5 years
Epoxy Polymers	Common	Yes	Yes, degrades	No. Exposure at the tank fittings	3 or 5 years

### Features

- Hot water storage up to 200°F\*
- Fiberglass insulation meets requirements of ANSI/ASHRAE/IES 90.1
- Durable coated steel jacket panels, field-replaceable
- Can use with connection to high-temperature solar heating or heat pump systems

### Corrosion Protection

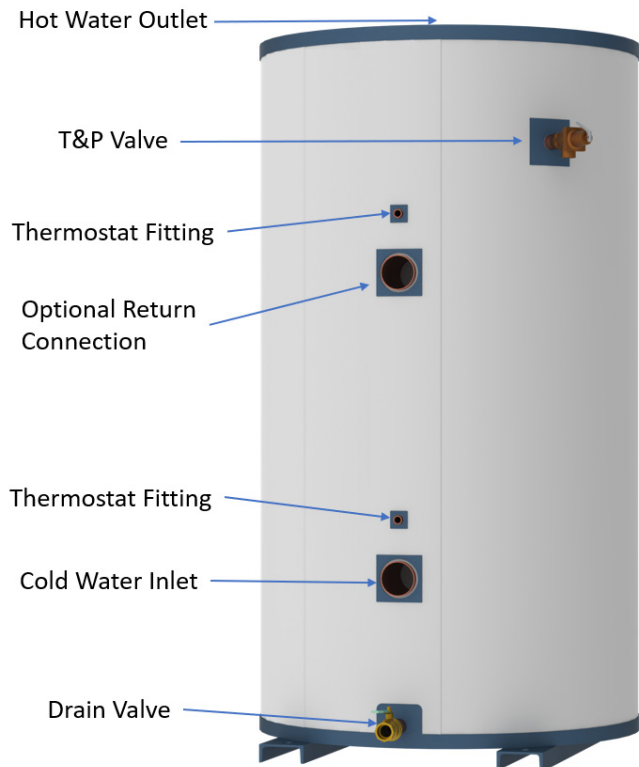
- AquaPLEX engineered duplex stainless steel alloy storage tank
- Corrosion-Proof, Serviceable, Solid-Bronze Tank Fittings: All tank connections are inherently corrosion-proof, non-ferrous fittings which do not require dielectric nipples for copper piping unlike carbon steel fittings used by other manufacturers
- Lining protection is not compromised when pipe is threaded into fittings
- No anode rods required or used

### Warranty

- 25-year AquaPLEX tank warranty
- One-year parts warranty
- First-year service policy

### Certifications & Standards

- ASME, section IV, part HLW stamped and National Board Registered for 150 psi MAWP
- Intertek / ETL listed NSF 372 lead-free
- CRN issued per province



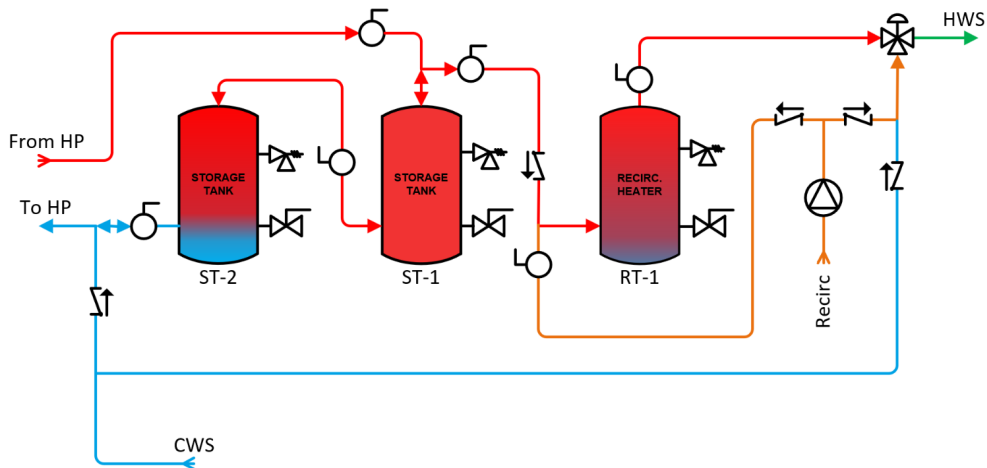
### Optional Features

- Long-life service policy
- Field-installed accessories including a tank thermostat, relief valves, and other installation kits
- Diffuser tee and inlet diffusers to support tank stratification
- Consult a representative for custom configurations

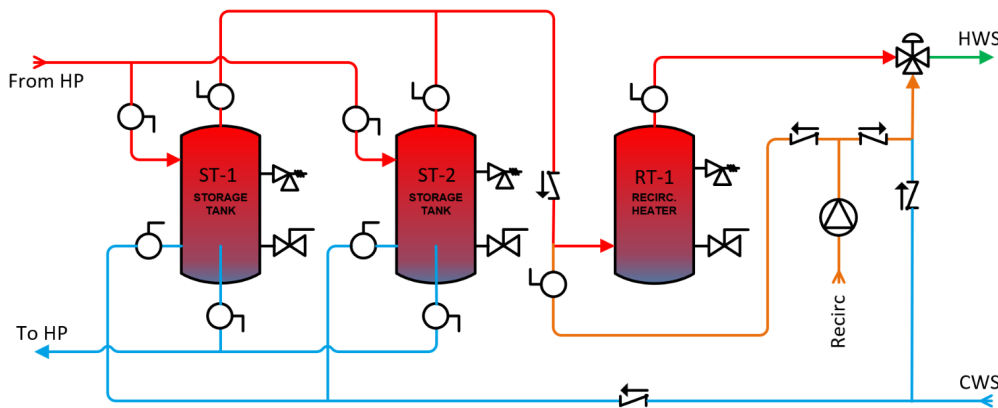
\*limited by ASME and for safety

# Hot Water Storage – Heat Pump Systems

## Designed to Stratify



**Single-pass** heat pump example configuration with recirculation



**Multi-pass** heat pump example configuration with recirculation

## Temperature Control

**Temperature Sensors:** Each tank has a thermostat fitting which can be fitted with both a thermowell and temperature probes to communicate internal tank temperatures to the heat pump water heater. If needed, additional fittings can be added to the tanks for more sensor locations.

**Fiberglass Insulation:** Minimizing the ambient heat loss of tanks reduces the rate of cycling on a heat pump and improves compressor life.

**Inlet Diffuser:** This baffle reduces cold water flow velocity into the bottom of the tank to reduce mixing with the stored hot water when delivering out to the system.

**Diffuser Tee:** Connected to the hot water inlet connection at the top of the tank, this accessory specifically designed for heat pump systems allows for hot water to be simultaneously delivered to and drawn from the tank, reducing circulation to promote stratification. Keeping a smaller thermocline through stratification improves the effectiveness of temperature sensors with regards to controlling heat pump cycling.

Visit [pvi.com](http://pvi.com) for additional documents regarding manuals, specifications, and warranties for AquaPLEX storage tanks.



Hot Water Solutions

PVI Industries • Fort Worth, TX  
USA: T: (817) 335-9531 • Toll Free: (800) 784-8326 • [PVI.com](http://PVI.com)