

## Technical Data Sheet

# Durawatt<sup>®</sup> Mini

## Electric Water Heater

Durawatt Mini is a compact yet powerful electric water heater engineered for a wide range of applications. Whether serving as a building recirculation heater, a sidearm unit for system backup, a booster heater, or a standalone solution, Durawatt Mini delivers dependable performance across diverse scenarios.

Constructed with AquaPLEX<sup>®</sup> duplex stainless steel, Durawatt Mini eliminates the need for anode rods and is highly resistant not only to aqueous corrosion in potable water at any temperature, but also chloride stress corrosion cracking. It excels in high-temperature environments, making it ideal for integration with other energy-efficient systems such as heat pumps, solar thermal and other technologies.

Designed for durability and ease of maintenance, the Durawatt Mini offers a long-lasting, reliable water heating solution tailored for sustainable building systems.

## Features and Benefits

- 12–54 kW input range for flexible sizing
- 480V, 3-phase standard construction
- Incoloy sheathed heating elements for durability
- AquaPLEX<sup>®</sup> duplex stainless steel for unmatched corrosion resistance – eliminates tank lining and anode rods, and resists chloride stress cracking and aqueous corrosion
- Industry-leading durability compared to 316L or 304L stainless steel
- Leg kit for floor mounting (optional equipment)
- Modbus communication through RS485 cable connection

## Certification & Standards

- ETL listed to ANSI/CSA safety standards
- ASME, section IV, part HLW stamped and National Board Registered



## Primary, Booster or Recirculation – All in One

Durawatt Mini and its unique design and features can serve as the primary water heater for domestic hot water applications or provide support for other PVI water heating equipment by supplying backup heating, booster heating, or dedicated recirculation heating to maximize the water heating system's ability to deliver domestic hot water efficiently and reliably.

## Unmatched Corrosion Resistance with AquaPLEX

Our revolutionary engineered design combines AquaPLEX duplex stainless steel alloy with highly specialized and proprietary manufacturing process. The result is a long-lasting, reliable water heater with superior corrosion-resistance.

## Warranty

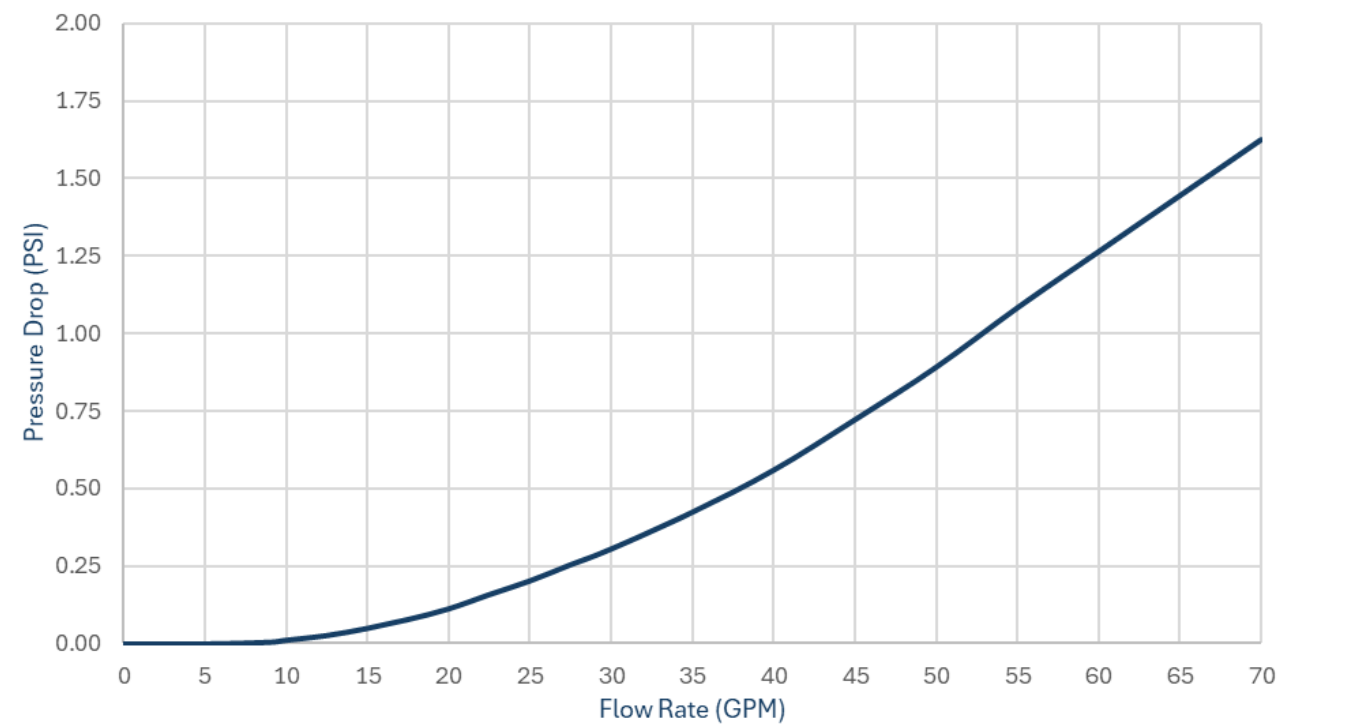
Proprietary design equipped with durable material and quality craftsmanship enable us to provide an industry leading warranty of 10 years.

# Technical Specifications

Model	PLAR12	PLAR18	PLAR24	PLAR30	PLAR36	PLAR45	PLAR54
kW Input	12	18	24	30	36	45	54
Electrical Supply	480 V, 3-phase, 60 Hz						
Current (Amps)	16	24	31	38	45	56	66
Hot Water Output 40-120F (gph)	61	91	123	153	184	230	276
Hot Water Output 40-140F (gph)	49	74	98	123	147	184	221
MAWP (psi)	150						
Maximum Flow (gpm)	70						
Water Inlet & Outlet	1 ½"						
Shipping Weight (lbs)	142	142	147	147	147	152	152
Wet Weight (lbs)	209	209	214	214	214	219	219

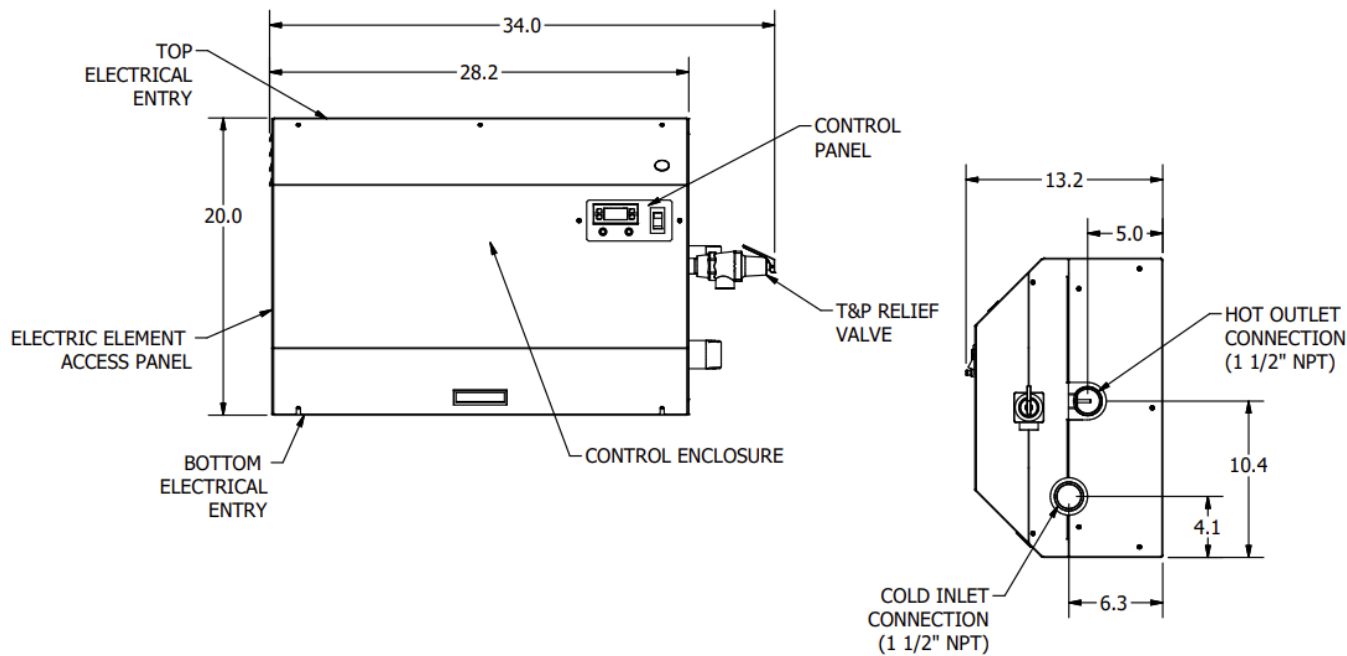
Model	kW Rating	Maximum Flow Rate at Temperature Rise (gpm @ °F ΔT)								
		10°F	20°F	30°F	40°F	60°F	80°F	100°F	120°F	140°F
PLAR12	12	8.2	4.1	2.7	2.0	1.4	1.0	0.8	0.7	0.6
PLAR18	18	12.3	6.1	4.1	3.1	2.0	1.5	1.2	1.0	0.9
PLAR24	24	16.4	8.2	5.5	4.1	2.7	2.0	1.6	1.4	1.2
PLAR36	36	24.6	12.3	8.2	6.1	4.1	3.1	2.5	2.0	1.8
PLAR45	45	30.7	15.3	10.2	7.7	5.1	3.8	3.1	2.5	2.2
PLAR54	54	36.8	18.4	12.3	9.2	6.1	4.6	3.7	3.1	2.6

## Pressure Drop



# Dimensions

In inches



Hot Water Solutions

PVI Industries • Fort Worth, TX