

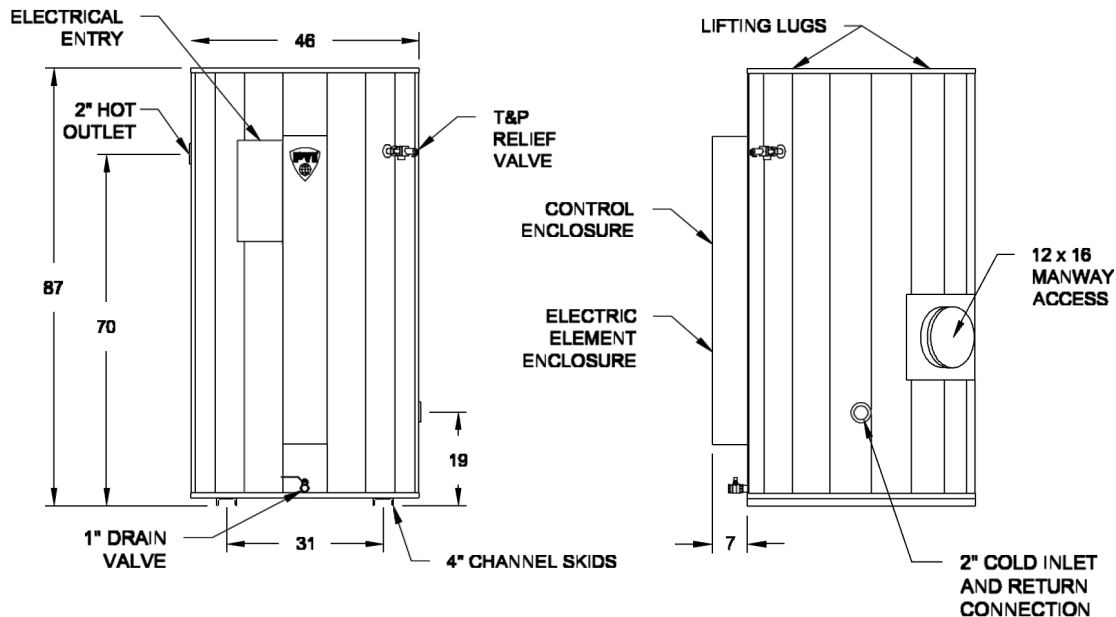
# Durawatt® Electric, Packaged Water Heater

Tank Series 400 Gal • AquaPLEX® Duplex Stainless Steel

| Model Number   | Recovery Rate GPH |           | Input kW | Element AMPS**  |          |          | Shipping Weight lbs |
|----------------|-------------------|-----------|----------|-----------------|----------|----------|---------------------|
|                | 40°-120°F         | 40°-140°F |          | 240V, 1Ø        | 240V, 3Ø | 480V, 3Ø |                     |
| 45 L 400A-VE   | 45                | 37        | 9*       | –               | 22       | 11       | 1220                |
| 90 L 400A-VE   | 90                | 70        | 18       | 75              | 44       | 22       | 1220                |
| 140 L 400A-VE  | 140               | 111       | 27       | 113             | 65       | 33       | 1220                |
| 180 L 400A-VE  | 180               | 150       | 36       | 150             | 87       | 44       | 1220                |
| 230 L 400A-VE  | 230               | 184       | 45       | 188             | 109      | 55       | 1230                |
| 270 L 400A-VE  | 270               | 220       | 54       | 225             | 130      | 65       | 1230                |
| 320 L 400A-VE  | 320               | 256       | 63       | 263             | 152      | 76       | 1230                |
| 370 L 400A-VE  | 370               | 300       | 72       | 300             | 174      | 87       | 1230                |
| 410 L 400A-VE  | 410               | 330       | 81       | 338             | 195      | 98       | 1240                |
| 460 L 400A-VE  | 460               | 370       | 90       | 375             | 217      | 109      | 1240                |
| 510 L 400A-VE  | 510               | 400       | 99       | 413             | 239      | 120      | 1240                |
| 550 L 400A-VE  | 550               | 440       | 108      | 450             | 260      | 130      | 1240                |
| 650 L 400A-VE  | 650               | 515       | 126      | Consult factory | 304      | 152      | 1270                |
| 740 L 400A-VE  | 740               | 590       | 144      |                 | 347      | 174      | 1290                |
| 830 L 400A-VE  | 830               | 664       | 162      |                 | 390      | 195      | 1300                |
| 920 L 400A-VE  | 920               | 737       | 180      |                 | 433      | 217      | 1310                |
| 1010 L 400A-VE | 1010              | 811       | 198      |                 | 476      | 238      | 1320                |
| 1100 L 400A-VE | 1100              | 885       | 216      |                 | 520      | 260      | 1330                |
| 1200 L 400A-VE | 1200              | 958       | 235      |                 | 563      | 281      | 1340                |

ASHRAE 90.1 compliant. For standard and optional equipment, see form #PV 8130. Dimensions in inches, unless otherwise noted. Contact PVI representative for higher inputs.

\*3-phase only. \*\* For 208V 3Ø models, see PV 9035. Add 2 amps for the control circuit.



## Standard Electrical Requirements

Control circuit transformer supplied and AC neutral conductor for grounding.

## Alternate Voltages:

For 230/460V, multiply kW and recovery by .92. multiply AMPS by .96.  
For 220/440V, multiply kW and recovery by .84. multiply AMPS by .92.



PVI reserves the right to change the design and specification without notice.

Hot Water Solutions

PVI Industries • Fort Worth, TX

© 2024 PVI