

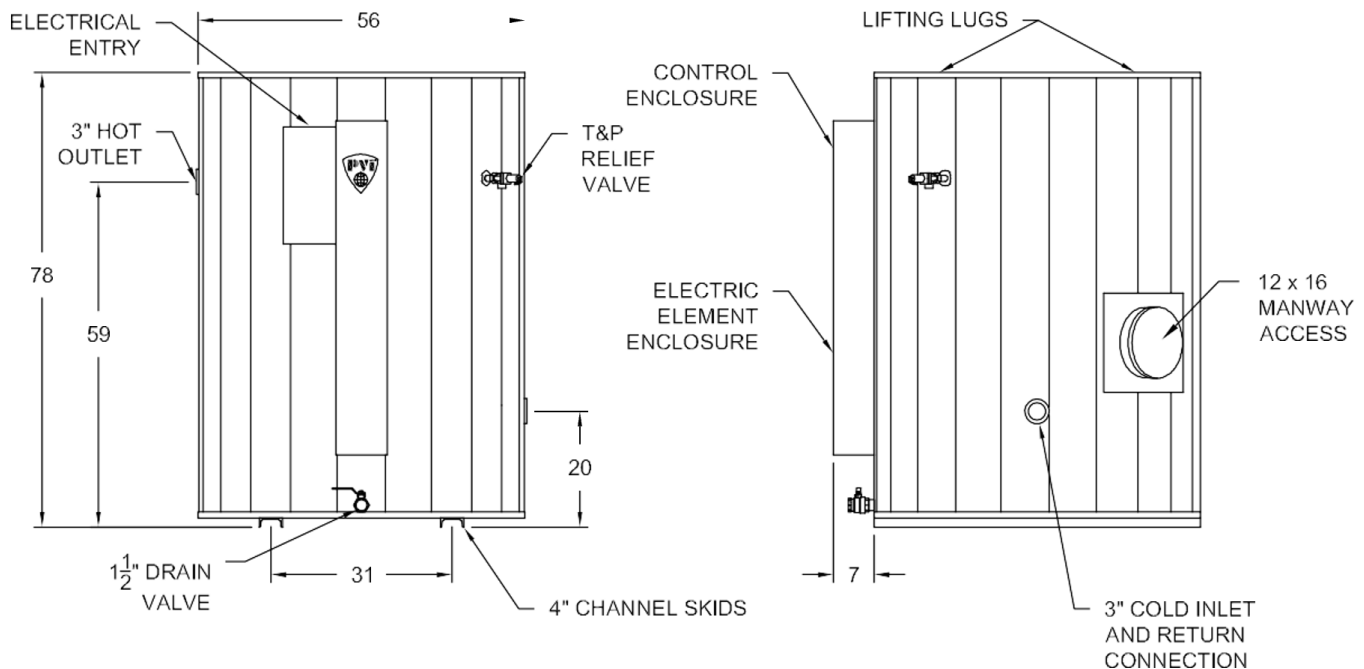
Durawatt® Electric, Packaged Water Heater

Tank Series 500 Gal, 208V, 3Ø • AquaPLEX® Duplex Stainless Steel

Model Number	Recovery Rate GPH		Input kW	Element AMPS**	Shipping Weight lbs
	40°-120°F	40°-140°F		208V, 3Ø	
45 L 500A-VE	45	37	9	25	1645
90 L 500A-VE	90	70	18	50	1645
140 L 500A-VE	140	111	27	75	1645
180 L 500A-VE	180	150	36	100	1645
230 L 500A-VE	230	184	45	125	1655
270 L 500A-VE	270	220	54	150	1655
320 L 500A-VE	320	256	63	175	1655
370 L 500A-VE	370	300	72	200	1655
410 L 500A-VE	410	325	80	222	1665
460 L 500A-VE	460	368	90	251	1665
510 L 500A-VE	510	405	99	276	1665
540 L 500A-VE	540	430	105	292	1685
610 L 500A-VE	610	491	120	334	1695
690 L 500A-VE	690	552	135	376	1705
770 L 500A-VE	770	614	150	417	1715
840 L 500A-VE	840	675	165	459	1725
920 L 500A-VE	920	736	180	501	1735



ASHRAE 90.1 compliant. For standard and optional equipment, see form #PV 8130. Dimensions in inches, unless otherwise noted. Contact PVI representative for higher inputs. **For other voltages, see PV 8454. Add 2 amps for the control circuit.



Standard Electrical Requirements

Control circuit transformer supplied on 480V only. A separate 120V circuit is required for controls on 208V and 240V or add a field wired control circuit and AC neutral conductor for grounding.

Alternate Voltages:

For 230/460V, multiply kW and recovery by .92. multiply AMPS by .96.
For 220/440V, multiply kW and recovery by .84. multiply AMPS by .92.



PVI reserves the right to change the design and specification without notice.

Hot Water Solutions